

# **FAMILY TREE**

of

**George Fuller and Ann Thompson**

**1781 - 1868**

of

**COUNTY CORK, IRELAND**

**Emigrants to Canada**



The family name Fuller is one of the oldest Scottish surnames and the name was first found on the English/Welsh border in the counties of Herefordshire and Salop. Gilbert and Ambrose Fuller held estates in the year 1273. The name migrated to Ireland about 1680 where they became a family of great opulence, being Sheriffs of Cork, Bishops of Armagh, and their Irish seat was at Ballyneen, Cork. The family also settled at early times in the New World.

This history begins with 1.000 George Fuller, emigrant of Ireland and traces his descendants in America.

1.1 indicates the first child of 1.000 George

1.13 indicates the third child of 1.1 and a grandchild of 1.000 George

1.A indicates the tenth child of a family, etc.

Thus 1.195 is the fifth child of the ninth child of the first child of 1.000 George and this fifth child is the fourth generation.

#### OTHER CODING

b - born

d - died

D - divorced

m - married

T - twin

This History was made possible by many people who contributed to information for this book.

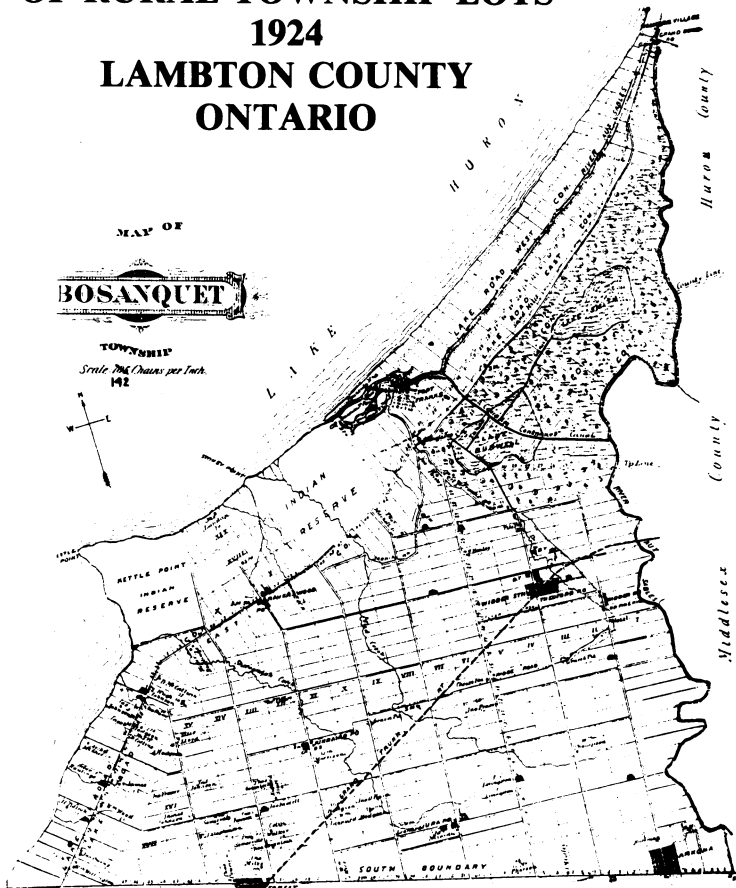
1.1169 Ivy (Fuller) Winter contacted many people of the Arkona area.

1.1119 Ruth (Fuller) Maxwell contributed several articles.

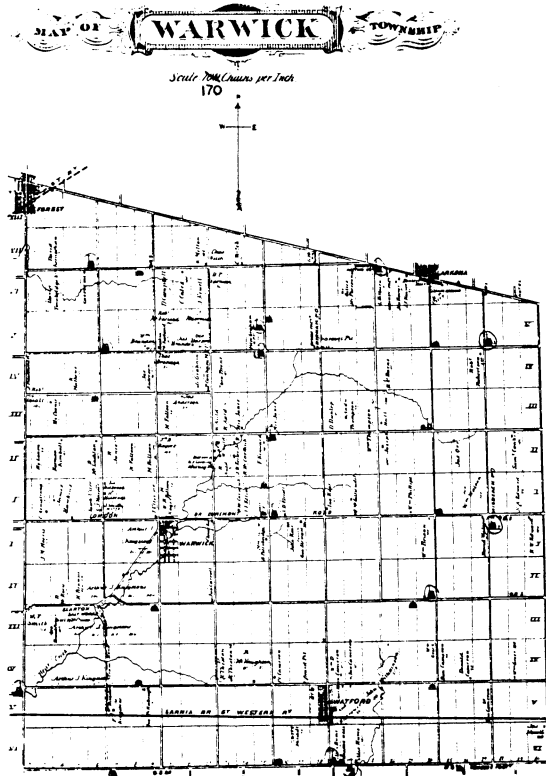
The information was compiled by 1.11154 Gordon H. Fuller, Box 14, Caledonia, Ontario NOA 1A0, from whom additional copies may be purchased.

FOR GENEALOGY RESEARCH USE ONLY

## OWNER/OCCUPANCY INDEX OF RURAL TOWNSHIP LOTS 1924 LAMBTON COUNTY ONTARIO



**OWNER/OCCUPANCY INDEX  
OF RURAL TOWNSHIP LOTS  
1924  
LAMBTON COUNTY  
ONTARIO**



**FOREST, town, Warwick Township, Lambton County  
Position 43 degrees 06' 82 degrees 00'**

The town of Forest is located in the northeast portion of Lambton County, about twenty-three miles northeast of the town of Sarnia on Highway 21 and the CNR.

The beginning of Forest dates from 1859, when the Grand Trunk Railway line from Stratford to Sarnia was completed. A small pumping station, nicknamed Forest because of the heavy forests that covered the area, was built at the junction of the townships of Bosanquet, Warwick, and Plymton. The railway station became the nucleus for the growth of the community. Some settlers had arrived in the area as early as the 1840's and 50's, including George West, Lachlan McFadyen, the McPhersons, Bradleys, Pettits, Holdsworths, Brodies, Haynes, Bayleys, Diers, Karrs and Carscaddens. In 1854 Timothy Resseuie laid out the first village lots.

That year a post office was opened with Robert Dier as the first postmaster. About the same time, John Woodroff started a general store and Philip Smith opened a tavern. In the late 1850's the first town hall was built. The Forest Mechanic's Institute was then formed in 1871, and in 1897 it became the Forest Free Public Library.

The community was incorporated as a village in 1872. The village council of 1873 included George West, reeve; and George Coultis, John Coultis, Robert Dier and John Mason, as councillors. In 1888, villages expressed the desire to become incorporated as a town, but Forest did not quite have the required population of 2000. To circumvent the problem, it was arranged to have one of the Grand Trunk Railway passenger cars remain at the station for an hour - just long enough to register the passengers and crew as Forest citizens! Alvin Rawlings was the town's first mayor in 1889.

The first school in the community opened in 1867. It was a private school for girls operated by a Miss McConough. A brick four-room school built in 1874 was replaced in 1911 when Central School was erected. Forest High School opened its doors in 1890. Destroyed by fire in 1940 it was rebuilt, and in 1960 the name was changed to North Lambton Secondary School.

The Anglicans were the first to erect a church in Forest in 1861. It stood on the site of the present-day Anglican Church. A Congregational church was built in 1863; a Roman Catholic church followed in 1865; and St. James Presbyterian Church was built in 1868. The Forest Baptist Church was constructed in 1871, the Gospel Hall in 1872, and the Salvation Army Citadel and the Pentecostal Hall were both built in 1937. Forest United Church opened in 1926. Forest Christian Reformed Church was built in 1953, and in 1956 the Jehovah's Witnesses opened a Hall.

Forest has always benefited by being the centre of a thriving agricultural region. Over the years a number of industries have contributed to Forest's growth, including the Forest Basket Company, Huctwith Produce, the Hopper Foundry, the Forest Cooperative Creamery, Hillside Feeds, and others. As well, Forest has a busy tourist season because of its proximity to Lake Huron.

The Forest-Lambton Museum opened in Forest in 1964. The population of the town in 1978 was 2,679.

## **WATFORD**

It was first known as Brown's Corners after an early settler called Richard Brown (1853). In 1854 the village's name was changed to Watford after an English city in Herefordshire. The Great Western Railway brought prosperity in 1859. Soon there were 5 stores, 2 hotels, 2 blacksmith shops, a cabinet shop, a cooperage, a tailor and a doctor. A grist mill and a saw mill was also in operation.

In 1873 the village was incorporated. The early Methodists were served by an itinerant Methodist lay preacher known by the colourful name of Uncle Joe Little.

Arthur J. Kingstone visited Upper Canada in 1833 to set in motion a large land settlement in Warwick Township and he took with him Mr. Joseph Little of Colnahinch, his near neighbour in the county of Longford, Ireland, to settle him as agent in Canada.

One of the first automobiles in Canada was built here in 1900 by a blacksmith, D. A. Maxwell.

Today corn and soya beans, poultry and egg production are important industries to the village of 1406 persons. (1980 statistics).

## **Ravenswood had major role**

**By RUTH FULLER MAXWELL**

Thousands drive through Ravenswood weekly enroute to the famed Ipperwash Beach area on Lake Huron. To them it is merely one point on the road.

Few will realize the hamlet dates back more than a century, and that at a time when travel was by foot, wagon or sleigh, - it was off the beaten track, known only to surrounding countryside and to residents of nearby reservations. To the latter, it was their trading post. At Ravenswood was a woodworker who made wagons and sleighs, and a blacksmith where iron wheels, horseshoes and other equipment were forged.

Now, Ravenswood has become the gateway to Ipperwash Beach, with its miles of driveway along the shore, leading west to Kettle Point, the geologist's paradise, and east to the previous army campsite, and resorts of Port Franks, Beach O'Pines and Grand Bend.

As well, it was recorded over 50,000 passed through the entrance to the Pinery Park in two days of July, 1969. Most of those went through this once obscure village. (Once the store was the mecca for the district.)

The store was a wooden structure, well wrinkled and seasoned with weather, in an ample surrounding yard in which was piled the stove wood the Indians used to purchase their necessities. The first owner was William Nimmo, who after successful years, retired to Toronto. He was succeeded by W. J. Wallace and from him the store passed on to R. J. Kersey.

The store also housed the post office, and three times a week the mail was brought in from Forest with bakery bread and sugar-coated buns made by Rumford Bros. None ever tasted so good.

These were special days; the road was busy and a good business ensued. Everything from soup to nuts could be bought, or so it seemed to the customer, whose wants were not too demanding.

Shelves and bins filled one side of the building in which was kept the food and other necessities — a counter ran parallel to this, on which sat scales and a cheddar cheese with a big knife in close proximity.

After the customer had a tasty nip of this, he indicated with his pointed finger how much was to be cut off. This, as well as meat, sugar, tea, raisins, butter and lard in little wooden containers, was weighed on the scales as bought. Candy, spices and what not were bought by the five and ten cents' worth according to the merchant's measure.

The Indian women made the baskets of thin strips of wood pounded out of black ash and decorated with their own home-made dyes. There were various sizes, from the children's lunch requirement, to the big feed basket for the farmer. They also made dainty baskets of sweet hay and ornamented with porcupine quills. No one could ever forget the perfume of these.

The Indian shopper bought candy, tobacco and tea first. Then followed necessary things, such as flour and salt pork. His articles he carried home in a sack slung over his back.

Oh yes, I must not forget the oil can that all brought for kerosene, which went away adorned with a potato on the spout, so that the hard-earned groceries would not be polluted.

On the opposite wall, shelves held a miscellaneous department, a cosmopolitan assortment of hardware, dishes, boots and shoes, socks, and mitts, long underwear, calico, blankets and much more. A counter in front held a glass showcase in which were displayed finer articles. In fact, enough trinkets with a few baubles were added in December to ensure a good Christmas trade.

Between these two counters stood the friendly box stove around which the farmers gathered in the evening to gossip both local and farther afield events. Told next day it became strictly authentic news. Mr. Kersey and his family operating the store had one clerk, Miss West.

A red brick store is the new order and TV and electric shops have replaced the first enterprises.

### **ARKONA, village, Twps, Lambton County**

Arkona is an incorporated village located on Hwy. 7, about 50 kilometres east of Sarnia. Population: 441 (1975).

The settlement began in 1821 when Asa Townsend located on a tract of 390 acres which he had obtained from the government hoping to find salt. Not finding salt, he settled down to the life of a pioneer farmer.

Others followed and a village was laid out and in 1851 a post office was set up.

The village at this time was known as Smithfield, but in 1857 the name was changed to Arkona after Cape Arkona on Germany's northern seas coast.

Arkona was incorporated as a village in 1876.

1.000 George Fuller

b 1781 - d 1868

m

Ann Thompson

1.1 William

b Sept. 22, 1812 -d 1881

1.2 Catherine

b 1818 - d 1837

1.3 George

b 1819 - d 1887

1.4 3rd son

after family arrived in New York he went for a walk and failed to return.

1.000 George Fuller was born in County Cork, Ireland, where he followed the occupation of milling. He was an Oatmeal miller (wealthy in Ireland) who was driven out by the Catholics through the rebellion. In the early twenties (1824) he came with his family to Quebec, locating in the electoral district of Jacques Cartier, where he spent some time, later removing to Southern Ontario and locating at Ancaster, County Brant, which was then a new country, and where he remained but a few months. Coming thence to County Middlesex, Ont., he followed farming until 1844, when he came West to County Lambton, and settled down to farming in Warwick township. Here he spent the remainder of his life. He was buried in Warwick village cemetery.

1.1 William

m

May 10, 1831

Matilda Black

b Nov. 11, 1812 - d 1892

The Two Volume family bible brought to Canada by 1.000 George Fuller from Ireland and now in the possession of 1.11162 Bruce Fuller has the following written insertions:

1) 1.100 Wm. Fuller landed in Quebec on 7th of September 1826

married on May 10th 1831

Left Quebec on the 17th of May 1838

2) 1.15 Wm Fuller left for Columbia on the 27 of March 1862

1.11 George

b Dec. 23, 1832 - d May 23, 1916

1.12 John

b June 5, 1834 - d Feb. 1, 1889

1.13 Catharine

b April 23, 1836 - d 1908

1.14 Jane

b April 3, 1838 - d Mar. 23, 1850

1.15 William

b April 16, 1840 (May 17, 1862 left for Gold Mines in Columbia, B.C.)

1.16 Thomas

b Feb. 22, 1842

1.17 Ann

b April 9, 1844 - d 1926

4 1.18 Matilda

b Jan. 24, 1846 - d Dec. 22, 1919

1.19 Margaret	b Sept. 7, 1847 - d 1847
1.1A Esther	b Mar. 7, 1850 - d 1906
1.1B Samuel	b Jan. 26, 1852
1.1C Sarah Fanny	b May 17, 1885 - d 1944

1.1 William Fuller, the son of George, was also born in County Cork, in 1812, and came to Canada with his parents, growing to manhood in the Province of Quebec. There he married Matilda Black, a native of County Down, Ireland.

Matilda's father, Andrew Black was a French Huguenot, and her Mother, Jane Nichol, a Scottish coventer.

1851 Census - 1.1 Wm. Fuller — Adelaide Twp, con 3, Lot W½ 2, 50 acres cultivated, 50 acres bush, 23 acres wheat - 400 bus. Hewed Log House.

Mr. William Fuller, with his wife and family, composed at that time of four children, came to Ontario in 1838, locating in Adelaide township, County Middlesex, where he engaged in farming for many years. After retiring from active life he came, in 1873, to Watford, County Lambton, where he lived retired and died in 1881, his wife surviving until 1892; both were buried in Warwick village cemetery. They died in the faith of the Methodist Church. Mr. Fuller was a Reformer.

1.11 George Fuller was but six years old when he came to Ontario with his parents, and he here received his education, from his father. He never attended school three months in his life. He worked at home on the farm until 1854, when he came to County Lambton and purchased 200 acres on the 2nd Line, south of the Egremont Road, in Warwick township, Lot 30. Here he remained over fifty years, successfully engaged in farming and stock raising. Mr. Fuller finally retired from active life and came to the line of Warwick township, where he and his wife have since resided, owning a small tract of land.

Mr. George Fuller married, in 1854, Miss Sarah Clark, born at St. Catherine's, Ontario, daughter of William Clark, and the couple celebrated their golden wedding in 1904 surrounded by their children and grandchildren. The children was born to them were: John C. was a farmer of Bosanquet township; Mary died when 31 years old; Jane married David Johnson, a fruit grower of Warwick township; William T. was a general merchant of Watford; Philip was a butcher and stock buyer of Watford; Francis Joseph was a farmer in Warwick township; Sarah married Thomas Marsh, owner of Spring Mills, West Williams; George T. was a farmer on the old homestead; Hannah L. married Robert Arthur Galt, of Warwick township; Samuel Robert lived at home.

Mr. George Fuller was a Liberal and in early life was very active in the interest of his party. He served as tax collector of Warwick township for a number of years, but later took no active interest in politics. He was for many years a local preacher in the Methodist Church, but in 1878 became connected with the Church of God, which faith he adhered to.

## **Great-great-grandfather's clock**

**Rebuilt clock will herald New Year for first time in two generations**

**By 1.1119 RUTH FULLER MAXWELL**

Great-Grandfather 1.1 William Fuller, of Irish ancestry, was a pioneer of Middlesex and Lambton counties. He lived on a farm near the village of Watford.

More than a hundred years ago, it was his pride and joy when the day came that he was able to buy a clock. I said "buy", but perhaps to negotiate would have been better, for the deal was put through by the exchange of maple sugar, which he carried on his back to London.



**1.1 WILLIAM FULLER**

**- - he reserved the right to wind it each night.**

You know the type of clock — a rectangular box with a glass door, behind which peeked out the numbers in Roman numerals. It was placed high on a shelf where meddlesome children and interfering elders would not be tempted to touch it. Only Great-Grandfather was allowed that privilege. Every night at precisely the same time it was mysteriously opened; the crank that wound the works inserted, and the weights adjusted. Whether the clock said so or not, when this task was completed, it was time to go to bed — the last job of the day.

Once a year the face was removed and the old gentleman took the day off and oiled the works with kerosene. The oil was applied with a feather. No further care was needed for day in and day out, year after year, the pendulum kept swaying away with steady gait, giving accurate time — like the old pioneer, it wasn't lazy.

At last, Great-Grandfather went to his rest and so the clock was handed down to his son. A little granddaughter 1.1111 "Lillian May" would sometimes be kept at the home while her parents drove to the nearby town of Strathroy to shop. Toys were scarce, and entertainment even more rare, so the clock intrigued the little girl. On the glass door hiding the pendulum was painted the prettiest red strawberries.



#### **1.125 NEWMAN FULLER**

**- - grandson of William  
cherished the childhood  
privilege of winding the  
clock and took it with  
him on his travels.**

With nothing else to do she learned to tell the time — any child would, but oh! those strawberries were so pretty, she never never could forget them.

As time went on, the clock was replaced by something more modern and so it was sent up to the attic where it was to repose for a long time.

Some years later a grandson, 1.125 Newman Fuller, returned from the United States for a visit. The clock had memories for him — there was no plugging into a switch in those days — for every night the clock had been prepared for the next day's duties. As a special concession he remembered standing on a chair and with great importance turning the key crank while Grandfather stood patiently by cautioning "careful laddie". Then away he went to bed with happy satisfaction to sleep, little dreaming of the big trains he was to command some day.

So it was, that the clock with no value and little attraction except for the associations in early life, was boxed up and taken back as a keepsake to Iowa. Years later, Newman Fuller also died but left no one interested in the clock. Later, a great-great-grandson of the old man was to be married. That old clock would be an antique, and he would like to have it. The little girl who had learned to tell the time so long ago sent for it.

If for nothing else, the clock was now famous for its travelling. The carefully preserved wording inside testified it had been made in Connecticut. Sold to great-grandfather in London, the clock had later been taken to Iowa, Montana and Washington. At last came the day when we were notified that it was in Customs at Sarnia.

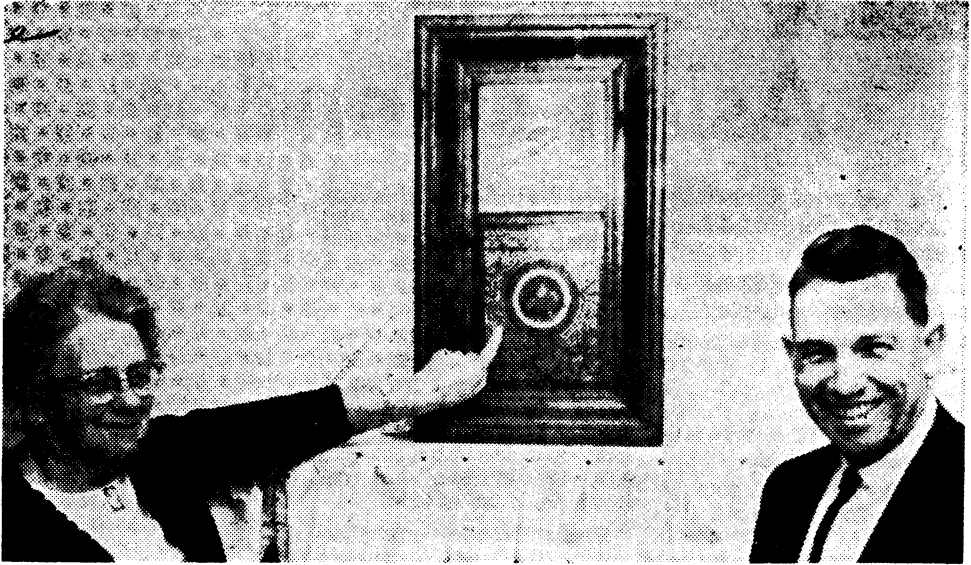
Back in Lambton again, the timepiece had returned and the unveiling was to take place. Behold the old relic with its dark layers of varnish, the case with a gaping seam at the four corners where the glue had lost its hold, the pretty glass strawberries a shattered mass. True, the dial was there, but minus the hands — so was the keyhole, but no crank. The same could be said of the pendulum but nothing for it to swing on. The heavy weights were still there.

We viewed the "remains" without saying much. The dump pile seemed the fitting place for it, but no — there lay memories of our old ancestor. He had had hardships and things to con-



quer which almost seemed impossible, but he had persevered. It was a challenge! We, his progeny, would not let the old forefather down — we would see what could be done.

The gingerbread veneer was removed and then began the work of scraping and sanding until the wood began to show its pretty grain. There was the darker stain on one side where you knew Grandfather's great thumb had left it imprint, as he held the clock while he wound it night after night.



**Clarence Hodgson, right, and his aunt, Mrs. Ruth Fuller Maxwell, author of this article, with the rebuilt clock. The clock, after travelling across the continent in the last 100 years, was returned to Lambton as a pile of broken pieces, to be rebuilt as a wedding present for Mr. Hodgson, a great, great grandson of William.**

Now the clock, with all its shortcomings, was brought before a watch repairer who was more or less of a genius at fixing things. "Yes," he could make it go, but this was only a casual glance as he was yet to find out the "innards" of that clock were missing.

And so it was the trek began — off to noisy auction sales, up to cobwebby attics and down to musty cellars, to find old forgotten clocks and to further dismantle them in the hopes of reviving the old relic.

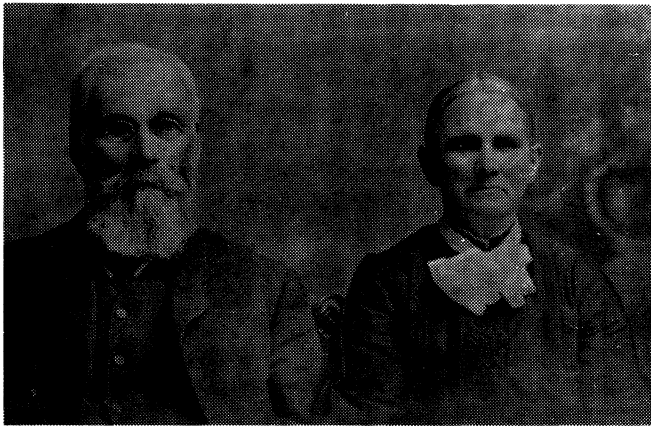
When several clocks had been disgorged, hands were found, so was a key crank and a mainspring — everything but the piece from which the pendulum swung. Well, the expert would make one!

An old painter was found and on a new glass door, a fine recreation of the red strawberries was accomplished.

By this time summer was passing and at last we were called by telephone to learn that the clock was ready. There it was looking very noble and actually alive — a little 'ahem', like a man clearing his throat and one - two - three — it was speaking the time. It was as if the old gentleman were coming back to life. The summer work had been rewarding.

In this year of 1967, we have turned the time back one hundred years while memory brings the light of other days around us.

- |                         |   |
|-------------------------|---|
| 1.11 George Sarah Clark | m Nov. 7, 1854.<br>b 1837 - d Nov. 21, 1925 |
| 1.111 John              | b Feb. 20, 1857 - d Sept. 17, 1945          |
| 1.112 Mary              | b Mar. 21, 1859 - d Oct. 20, 1890           |
| 1.113 Janey             | b Aug. 12, 1862 - d 1926                    |
| 1.114 William           | b Dec. 1864 - d June 1, 1953                |
| 1.115 Philip            | b 1866 - d 1939                             |
| 1.116 Joseph            | b 1869 - d 1948                             |
| 1.117 Sarah             | b June 21, 1871 - d June 21, 1937           |
| 1.118 Geo. Thompson     | b Sept. 2, 1873 - d 1952                    |
| 1.119 Hannah            | b Nov. 12, 1876 - d 1966                    |
| 1.11A Samuel            | b Dec. 27, 1878 - d 1957                    |



**1.11 George Fuller, Sarah (Clark)**



**1.11 George Fuller**



**1.11 George Fuller Family**

**Back Row: Annie (Doan), Joe, Jane, Philip,  
Will, Hannah; Front Row: Tom, Sarah, Mary**

### Diamond Wedding - Newspaper Account

The 60th anniversary of the wedding of Mr. and Mrs. George (1.11) Fuller of Arkona, was fittingly celebrated by them, their children, grandchildren, great-grandchildren and a few friends at the home made happy for 60 years by a loving and devoted husband and wife. They have enjoyed the happiness and prosperity of their children, they have loved and sorrowed together, and at the expiration of 60 years of married life, the gathering of loving children and grandchildren on Saturday, Nov. 7th, was a most enjoyable event. The happy couple began their married life on Nov. 7th, 1924, when Miss Sarah Clark, of Warwick, became Mrs. George Fuller. They have good health, and the prospect of several more years of happiness in their home appears good.

There were present on the occasion seven children, 32 grandchildren and 8 great-grandchildren who with Mrs. Margaret Munro of Forest, Mrs. Mary McCuish of Bosanquet, and Mr. and Mrs. N.H. Fuller and daughter Margaret, of Miles city, Montana, formed the party. An excellent dinner was served, the butter and biscuits on the table having been made by Mrs. Fuller, who has lost none of her cunning in that line with the passing years. During the day numerous telephone and telegraph messages of congratulations were received by the venerable couple. The guests presented Mr. and Mrs. Fuller with a handsome baseburner, the first coal stove they have had, having always burned wood. Mr. Fuller has passed his 83rd birthday and Mrs. Fuller is 78 years old. May they have many more years of happiness is the sincere wish of all who know them.

1.111 John Fuller farmed in Warwick where his 3 eldest children were born. Then he farmed lot 66 Lake Road Bosanquet, Lambton cty. This farm was purchased about 1888 from his father-in-law Hugh Johnson who continued to live in a second home on lot 66 with his wife Flora Hamilton. John lived in H. Johnson's log house, then built home that was destroyed by fire Feb. 29, 1928. He rebuilt present home.

### Obituary - Sarnia Observer, Oct. 24, 1890

1.112 Miss Mary Fuller, eldest daughter of Mr. George Fuller, 2nd line S.E.R. died on Monday morning. The deceased was brought home from Bosanquet last week suffering from an attack of typhoid fever, which developed into conjection of the brain. The funeral on Wednesday was very largely attended, the service being conducted by the evangelists. The bereaved family have the sympathy of the community in their affliction.

- |                              |                                    |
|------------------------------|------------------------------------|
| 1.111 John                   | m Jan. 10, 1881                    |
| Euphemia Johnson             | b June 1, 1859 - d Dec. 15, 1931   |
| 1.1111 Lillian May           | b May 1, 1883 - d Sept. 1962       |
| 1.1112 Sarah Elva Helena     | b May 13, 1885 - d April 2, 1979   |
| 1.1113 Hugh Victor           | b Mar. 24, 1887 - d Aug. 8, 1979   |
| 1.1114 George Mathews        | b July 22, 1889 - d Aug. 15, 1982  |
| 1.1115 Archibald Milton      | b Dec. 12, 1890 - d Mar. 11, 1970  |
| 1.1116 William Philip        | b Jan. 16, 1893 - d Mar. 29, 1981  |
| 1.1117 David Stanley         | b Nov. 22, 1897 - d Feb. 9, 1949   |
| 1.1118 Flora Elizabeth Edith | b April 18, 1897 - d Jan. 19, 1982 |
| 1.1119 Ruth Euphemia         | b Jan. 7, 1900                     |

### North Lambton Pioneer Dies At 93

A North Lambton pioneer in many fields, Hugh Victor Fuller, died Aug. 8 in his 93rd year. During his long career he was a teacher, farmer, Evangelist, Clerk of Bosanquet Twp., for 24 years, a past Chairman of the Ausable Conservation Authority, one of the first in Lambton to assemble a herd of Registered Holsteins, a charter director of the Lambton Cattle Breeders' Association and recipient of the Queen's Anniversary medal.

Born 1887 in South Warwick Twp., of landclearing pioneers John and Euphemia Fuller, he came as an infant to his maternal grandparent's homestead on Lake Road Bosanquet where he spent most of his life.

At 17 he underwent a profound spiritual acceptance which led him to years of Christian dedication and leadership. Not only was he a Gospel Evangelist throughout Western Ontario, but for 2 decades he had a gospel tent pitched on his land on the Lake Road for Evangelistic meetings. This land was donated recently by Mr. Fuller for the site of the LakeShore Gospel Hall now being built by volunteer labor and until the day before his death he watched with interest the progress of the Church building.

His education began in the original frame school house No. 7 Bosanquet. When the new brick school was erected on the Fuller farm in 1893 he was in attendance at its opening and when the last class was held in 1962 Mr. Fuller also attended.

As a youth he rode his bicycle to Forest to attend High School and later Model School, where he graduated in 1907. He taught for 4 years (1907-1911) at S.S. No. 10 Juro School, leaving to attend the School of Chiropractory in Davenport, Iowa. For a short time he practiced in Niagara Falls, Ont.



**1.1113 Victor Fuller and 1.111 Lillian Fuller (1952)**

In the 1920's he returned home to manage the farm and fruit orchards. From 1930 to 1955 he was Clerk of Bosanquet Twp. and also its representative to the Ausable Conservation Authority serving as chairman for one year. In recognition of his contribution to the township he was awarded the Queen's Silver Anniversary Medal in 1977.

In 1928 he purchased the old church building in the corner adjacent to his farm, and converted it into an apple storage. To help others with marketing of the fruit, he along with other growers, was instrumental in seeing the Lambton Growers Cold Storage built in Forest and acted as Sect.-Treas. for many years.

Mr. Fuller never married. He came from a family of 9, of whom are left, his brothers George of Toronto, William of Forest and sisters Mrs. Bessie Hodgins, Forest and Mrs. Ruth Maxwell of Bosanquet. In addition 20 nieces and nephews mourn his passing.



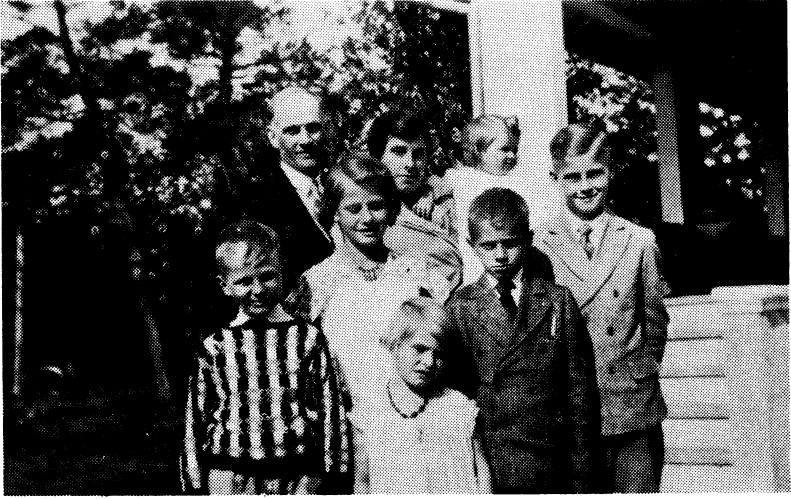
**Grandchildren and Spouses of 1.111 John Fuller & 1948)**

**Back Row: Robert Fuller, Harold Fuller, Gord McIntosh, Marshall Hodgson, Jim Brandon, Bruce Fuller, Camilla Falconer, Hugh Kersey; Middle Row: Madeline Fuller, Eunice Fuller, Helen McIntosh, Madeline Fuller, Mima Kersey and baby Patricia Ann, Esther Brandon, Elva Falconer; Front Row: Hazel Greenwood, Alma Hodgson**

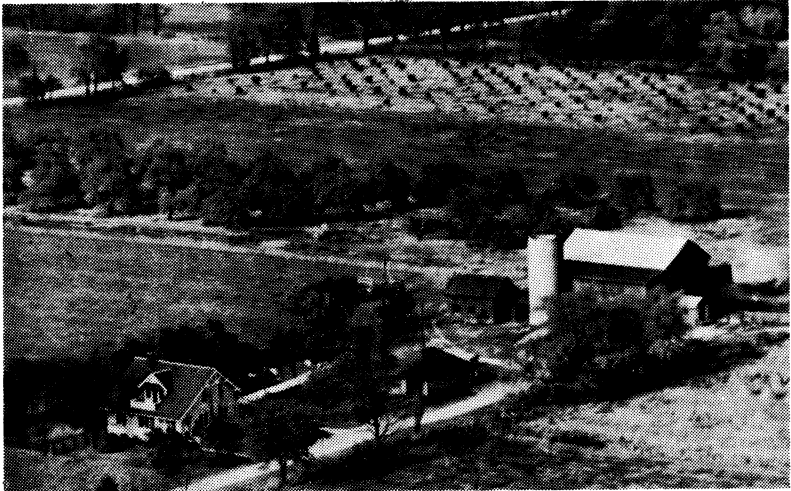


**Seated: 1.111 John Fuller, Euphemia (Johnson) (1931)**

**Standing: Ruth, George, Sadie, William, Victor, Lillian, Archie, Stanley, Bessie**



**Back Row: 1.1115 Archie Fuller, Hilda (Rawlings) Jean (1931); Front Row: Gordon, Hazel, Edythe, Harold, Robert**



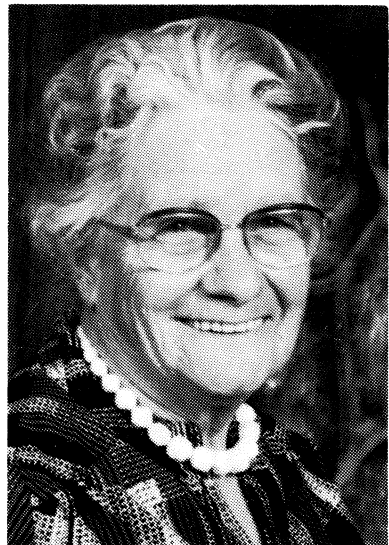
**1.111 John Fuller Farm**



**Back Row: Hugh, Elva, Robert, Esther, (1931); 2nd Row: Harold, Gerald, Lillian, June, Bruce and Helen, Jean and Hazel; Front Row: Gordon, Clarence, Dorothy, Edythe; Seated: 1.111 John Fuller and Euphemia**



**1.1112 Sadie (Fuller) Kersey**



**1.1119 Ruth (Fuller) Maxwell**



**1.11152 Hazel (Fuller) and Roy Greenwood 1958**



**Archie Fuller, Albin Hodgson, Stanley Fuller, Wm Fuller, Hilda Fuller, Bessie Hodgson, Jennie Fuller, Grace Fuller**

1.174 Robert John Kersey	b Feb. 13, 1885 - d July 1953 m June 24, 1909
1.1112 Sarah (Sadie)	
1.11121 Esther	b July 11, 1910
1.11122 Hugh	b Sept. 30, 1912
1.11123 Elva	b Nov. 29, 1917
James Brandon	b 1914 m
1.11121 Esther	
1.111211 Lorne	b July 18, 1944
1.111212 Allan	b Feb. 20, 1948
1.111211 Lorne Nancy Johnson	m b 1949
1.1112111 Peter	b Sept. 21, 1977
1.1112112 Nicole	b Mar. 27, 1981
1.111212 Allan Susanna Kember	m b 1950
1.1112121 Vicky	b Aug. 5, 1970
1.1112122 Norman	b Sept. 5, 1972
1.11122 Hugh Mima Hutton	m June 14, 1947 b Mar. 17, 1922
1.111221 Patricia Ann	b April 4, 1948
1.111222 Ruth Elizabeth	b Nov. 23, 1949
1.111223 Marilyn Eileen	b Dec. 19, 1950
1.111224 Robert John	b Dec. 21, 1958
1.111225 David Hugh	b June 19, 1961
Robert Edwin Dyck	m July 24, 1976
1.111222 Ruth	
1.1112221 Katherine	b Sept. 13, 1977
1.1112222 Marvin	b May 14, 1980
1.1112223 Kevin	b Feb. 14, 1983
Jeffrey Tolman	m Nov. 28, 1981
1.111223 Marilyn	
1.1112231 Jennifer	b Dec. 30, 1983
1.1112232 Daniel	b Oct. 1985
1.111224 Robert Kersey Sandra Harris	m July 5, 1986 b Sept. 1963
Camilla Falconer	b 1917 m
1.11123 Elva	
1.111231 Bruce	b Oct. 13, 1952
1.111231 Bruce Robin George (D)	m (2 George children of previous marriage)
1.1114 George Fuller Florence Catherine Louisa Dunlop	m b Sept. 13, 1900
1.11141 William Gerald	b May 10, 1921
1.11142 June Florence	b Feb. 13, 1923
1.11143 Victor Ross	b Aug. 21, 1932
1.11141 Gerald Thelma Irene Robins	m Mar. 31, 1951 b Nov. 13, 1924
1.111411 David Leslie	b Jan. 31, 1952
1.111412 Donald Gerald	b Jan. 23, 1953



1.111413 Margaret Leith	b Nov. 19, 1955
1.111411 David	m Oct. 25, 1975
Bonnie Jean Scarfone	b Mar. 25, 1951
1.1114111 Jacob David	b Aug. 11, 1976
1.1114112 Lesley-Anne	b May 20, 1979
Gimo Peter IDO TRUANT	b June 11, 1955
	m Nov. 10, 1979
1.111413 Leith	
1.1114131 Tasha Maria	b May 5, 1982
1.1114132 Rachel Caitlem	b Jan. 22, 1984
William Holmes	b Jan. 21, 1916 - d Feb. 19, 1978
m 1.11142 June	
1.111421 Sandra Jane	b May 19, 1953
John Bayliss	
m 1.111421 Sandra (D)	
Larry Moore	
m 1.111421 Sandra	
1.11143 Victor	m 1955
Agnes (Nan) Lowe	b 1931
1.111431 George Ross	b Jan. 12, 1956
1.111432 Linda	b Jan. 28, 1968
1.111431 George	m ?
1.1115 Archie Fuller	m Aug. 28, 1919
Hilda Mary Elizabeth Rawlings	b July 23, 1900
1.11151 Robert George	b May 18, 1920
1.11152 Hazel Elizabeth	b July 27, 1921
1.11153 Harold Gladstone	b Jan. 23, 1923
1.11154 Gordon Herbert	b July 25, 1924
1.11155 Edythe Louise	b Jan. 1, 1927
1.11156 Hilda Jean Winnifred	b June 16, 1930

### **Life in the First Half of the 20th Century by 1.11154 Gordon Fuller**

My mother, Hilda Mary Elizabeth Rawlings, was born July 23rd, 1900, the third child and first daughter of Julia Ellen Clemens and Herbert Rawlings at her father's home L.R.E., the second farm east of Ravenswood on the north side of the road.

She attended Ravensood S.S. -8 school, where her father and mother had both attended and where I and my brothers and sisters also attended. My nieces also obtained schooling here. This school was built in 1863 and used continuously until about 1965 when the Central Kinnaird school was built. It was heated by a large box stove, fed by wood which in the winter was fiercely hot near to it, but was warm in the outer reaches of the room. At the time that I attended 1930-38 water was supplied by a well and hand pump. The toilets were outdoor, situated at the back of the property. 'Anti, anti I over' was favourite recess pastime, as were soft ball games played progressively (i.e. the catcher moved up to bat when the current batter struck out). In my early years at this school, a young teacher, Miss Heien Smith, right out of college was paid \$550.00 to teach 8 grades of about 45 students in total. One of our favourite pastimes was catching mice which made their home in the walls and came out of a hole near the lunch basket shelf to feed on our dinners. Most students carried lunches in woven baskets made by the Indians at Kettle Point Reservation. When a mouse was sighted, all would be quiet until he had strayed from the hole, and then someone would dash to plug the hole and hence cut off the retreat. Then the battle was on and usually lost by the mouse.

After attending grades 1 to 8 my mother helped her mother with a growing family at home. On August 28, 1919 and after the termination of the 1st World War, my mother married Archie Fuller, who had attended high school and normal school at Stratford 1910-11 and had taught school at Kinnaird. They bought a farm five farms west of Ravenswood that at one time was owned by Henry Clemens and with a house built by his son Simon in 1875. My father was raised on L.R.W. on the 16th concession about 3 miles from my mother's home.

My father engaged in general farming with milk cows, selling the cream, hens, pigs and fruit - strawberries, raspberries, cherries, peaches, pears. In later years he grew soy beans and sugar beets. Teams of horses supplied the power for machinery. Cows were milked by hand until I went to University in 1943.

One of my earliest memories was the purchase in 1928 of a Model A Ford car for a price of \$800.00. This money was raised from the cherry crop. Formerly we owned a Model T Ford. In the winter we often drove the horse and cutter to Ravenswood for supplies. We had a warm buffalo rug and often heated bricks on the stove and wrapped them in paper as foot warmers.

My mother did all her cooking on a wood fired stove. This wood was secured during the winter from the bush and sawed into short lengths and split with an axe. Each day it was my chore to fill the kitchen wood box. We heated the living and dining rooms by stoves using wood or coal. The upstairs were left to fend for themselves. They were mighty cold in the mornings.

We used coal oil lamps, Aladdin lamps and gasoline lamps and lanterns until hydro was installed about 1940. From 1930 until 1938, the depression was upon us. As well, there was a lack of rain so that crops were poor. Many farmers came to Ontario from the West as these were the drought years out West. Our 1928 Ford held out for 16 years until 1944 when my father was able to buy a 1940 V-8. During the depression years we were able to pay interest only on the farm mortgage that was purchased in 1919.

When my father retired in 1964 he sold the 100 acre farm to Jack Rogers, who now farms about 400 acres with the help of one son and expensive and powerful machinery.



**Back Row: Suzanne, Hugh, Calvin, Russel, John and Mark, Robert, Douglas, David;  
3rd Row: Mary-Jane, Ruth, Dale, Carol, Lois, Jim; 2nd Row: Pegi, 1.115 Archie and  
Hilda Fuller (Grandparents), Tom; 1st Row: David, Edward, Calvin, Debra, Philip**



**Front Row: Roy and Hazel Greenwood, 1.115 Archie and Hilda Fuller, Edythe and Arthur Blades; Back Row: George and Jean Postif, Harold and Madeline Fuller, Robert and Madeline Fuller, Gordon and Liz Fuller**

1.11151 Robert Madeline Inez Nieuborg m.2 Aug. 9, 1986 Dorene Wielenga	m Aug. 2, 1948 b June 18, 1929 - d Mar. 29, 1985  b July 4, 1943
1.111511 Suzanne	b Aug. 7, 1949
1.111512 Mary Jane	b Sept. 30, 1954
Allan Thompson m Aug. 2, 1975 1.111511 Suzanne	b July 5, 1949
1.1115111 Craig Eric	b Oct. 26, 1977
1.1115112 Ian	b Feb. 26, 1980
1.1115113 Trevor	b July 19, 1982
Michael Gardner m May 8, 1983 1.111512 Mary Jane	b July 21, 1955
Roy Greenwood m Dec. 26, 1951 1.11152 Hazel	b Sept. 26, 1920
1.111521 David	b Oct. 4, 1952
1.111522 Hugh	b Nov. 4, 1954
1.111523 Philip	b Aug. 18, 1959
1.111521 David m May 24, 1975 Josta Hoornweg	b Oct. 13, 1953
1.1115211 Darcy	b Dec. 8, 1977
1.1115212 Adam	b May 17, 1981
1.1115213 Daniel	b April 14, 1984
1.111522 Hugh m Aug. 23, 1975 Willa McCahill	b May 6, 1953
1.1115221 Andrew	b May 14, 1979
1.1115222 Paula Grace	b June 28, 2981

1.111523 Philip  
m Dec. 1, 1984  
Janet Sutherland b Mar. 9, 1959

1.11153 Harold  
m Oct. 29, 1949  
Madeline Henderson b Oct. 17, 1927

1.111531 John b Sept. 20, 1950  
1.111532 Russel (T) b Aug. 18, 1953  
1.111533 Robert (T) b Aug. 18, 1953  
1.111534 Douglas b July 23, 1956  
1.111535 James b Mar. 5, 1958  
1.111536 Thomas b Oct. 20, 1961  
1.111537 Calvin b June 29, 1964  
1.111538 Mark b Sept. 26, 1968

1.111531 John  
m Aug. 26, 1978  
Wendy Letourneau b May 10, 1952

1.1115311 Janet-Marie b Sept. 8, 1979  
1.1115312 Rebekah Jane b May 3, 1983  
1.1115313 Timothy John b July 12, 1985

1.111532 Russel  
m Aug. 9, 1975  
Becky Copley b Mar. 21, 1956

1.1115321 David Bruce b Dec. 15, 1977  
1.1115322 Sara Janine b Oct. 29, 1980  
1.1115323 Bethany b Oct. 8, 1983  
1.1115324 Joseph Victor b Oct. 20, 1986

1.111533 Robert  
m Sept. 5, 1976  
Helen Pulido b July 26, 1956

1.1115331 Rosalyn Heather b Feb. 9, 1980  
1.1115332 Jason Robert b Dec. 27, 1982  
1.1115333 Colleen Meghan b Dec. 23, 1983  
1.1115334 Yvonne Ashley b Oct. 15, 1985

1.111532 James  
m Aug. 22, 1981  
Wendy Kirkpatrick b May 1958

1.1115321 Andrew b Nov. 24, 1982  
1.1115322 Joshua William b June 12, 1986

1.11154 Gordon  
m June 25, 1952  
Lorna Elizabeth Carruthers b Apr. 30, 1929

1.111541 Pegi Lorrie b Oct. 15, 1953  
1.111542 Paul Calvin b May 18, 1955  
1.111543 Dale Yvonne b Jan. 15, 1957  
1.111544 Debra Elizabeth b Apr. 16, 1962

Norman Samuel Rappaport b Feb. 21, 1954  
m Aug. 24, 1978  
1.111541 Pegi

1.1115411 Sarah Frances (T) b Dec. 12, 1985  
1.1115412 Rebecca Verna (T) b Dec. 12, 1985

1.111542 Calvin  
m Feb. 22, 1986  
Margaret (Peggy) Ann Slobodian b Nov. 4, 1958

Peter Brandon Cowley b Aug. 1, 1956  
m Apr. 26, 1980  
1.111543 Dale

Steven Roy Dear m Apr. 14, 1984 1.111544 Debra	b Sept. 15, 1962
Arthur Blades m Aug. 5, 1950 1.11155 Edythe Fuller	b July 20, 1926
1.111551 Carol Anne	b Sept. 9, 1955
1.111552 Mary Louise	b Aug. 29, 1960
1.111553 David Charles Arthur	b Jan. 7, 1962
Terry Harasym m June 3, 1978 1.111551 Carol	b June 13, 1951
1.1115511 Jessica Anne	b Feb. 23, 1982
1.1115512 Danica Lee	b Apr. 3, 1986
George Postif m May 17, 1952 1.11156 Jean Fuller	b Aug. 18, 1930
1.111561 Lois	b Feb. 25, 1953
1.111562 Ruth	b Aug. 16, 1956 - d Oct. 18, 1973
1.111563 Edward	b Aug. 21, 1962
Gregory Presley m Sept. 1, 1984 1.111561 Lois	b Sept. 19, 1948
1.1115611 Emily Ruth	b Dec. 14, 1985

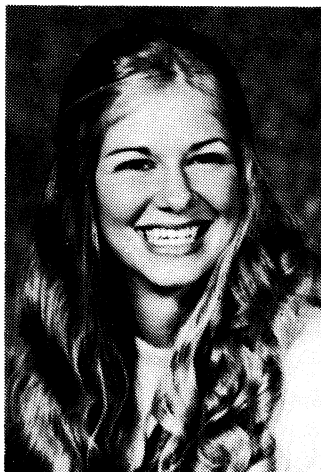
## OBITUARIES

### POSTIF

Ruth Anne Postif, daughter of a former local girl of this area known as (Jean Fuller) of Reavenswood, Ontario.

Ruth, age (17) was abducted on October 18th, 1973 at about 3:00 p.m. from Village Plaza shopping centre in Dearborn, Michigan. Ruth left home at 2:30 p.m. to cash her pay check from a Howard Johnson's Restaurant where she worked as a part time cashier and Hostess. Ruth was last seen in a local shoe store where she purchased a pair of red shoes which were later found in the trunk of her abandoned car. The car was found abandoned in a field and wooded area in Washinaw County near Ann Arbor, Michigan about (35) miles from the shopping centre where Ruth was last seen on October 18th, 1973. State Police recovered the car and started the search in that area. Over 200 people joined in the search, but it was not until the son, Miss Mary Roberts of London; Mrs. Edgar Rawlings; and Mrs. John Maxwell. the body of Ruth Anne Postif.

As a result of the tragedy millions of people are brought face to face with the brevity of life. Ruth was a Born Again Christian and was planning to become a Missionary Nurse.



1.111562 Ruth Postif

The TV News media and all local newspapers gave Ruth's story front page publicity.

Ruth had one desire in life and that was to tell all that would listen, of her love for her Lord Jesus Christ. Today Ruth, is in Heaven. Jesus said: I am the way, the truth, and the Life: No man cometh unto the Father but by me. - John 14:6.

Over 1,100 people attended the funeral service.

Those in attendance at the funeral of Miss Ruth Postif, Dearborn, Mich., were Mrs. Archie Fuller, Mr. and Mrs. Robert Fuller and family; Mr. and Mrs. Harold Fuller and family; Mr. and Mrs. Gordon Fuller, Caledonia; Mr. and Mrs. Roy Greenwood and family; Mr. and Mrs. Albin Hodgson; Mr. and Mrs. Clarence Hodgson and family; Mr. and Mrs. Marshall Hodgson; Mr. and Mrs. Gordon McIntosh and family; Mrs. Bruce Fuller; Mrs. Wm. Richardson, Miss Mary Roberts of London; Mrs. Edgar Rawlings; and Mrs. John Maxwell.

1.1116 William Fuller	
m.1. Dec. 26, 1918	
Jennie (Martha Jane) Clarke	b July 3, 1893 - d Sept. 30, 1961
m.2. Ruth Robertson	b 1900 - d 1978
1.11161 Helen	b Nov. 18, 1922
1.11162 Bruce Clarke	b Nov. 22, 1930
Gordon McIntosh	b Mar. 7, 1919
m	
1.11161 Helen	
1,111611 Jane	b Mar. 14, 1946
1.111612 Douglas	b Mar. 30, 1949
1.111613 Heather	b June 2, 1954
1.111614 Elaine	b July 14, 1956
Gerald Zupo	b Dec. 26, 1949
m	
1.111611 Jane	
1.1116111 Jennifer	b Sept. 22, 1970
1.1116112 John Mark	b Oct. 20, 1972
1.111612 Douglas	
m	
Gayle Burton	b Aug. 15, 1947
1.1116121 Todd	b Oct. 2, 1974
1.1116122 Tiffany	b Sept. 4, 1978
Danny Gutteridge	b Sept. 8, 1951
m	
1.111613 Heather	
1.1116131 Melissa	b Oct. 17, 1979
1.1116132 Abigail	b Apr. 22, 1982
Steve Vukivic	
m	
1.111614 Elaine	
1.1116141 Melanna	b Sept. 1, 1983
1.1116142 Marco	b Jan. 31, 1986
1.11162 Bruce	
m	
Eunice Durley	b Aug. 29, 1928
1.111621 Donald John	b Dec. 30, 1953
1.111622 Kenneth Bruce	b Aug. 27, 1955
1.111623 Joseph Shane	b Oct. 28, 1956
1.111624 Janice Lee	b April 16, 1959
1.111625 James William	b Feb. 10, 1961
1.111621 Donald	
m	
Donna Charlton	b 1958
1.1116211 Cheri	b Dec. 24, 1977
1.1116212 Shelly	b Nov. 3, 1979

1.111622 Kenneth m Barbara Brewbaker	b Feb. 1957
1.1116221 Darcy James	b Nov. 23, 1981
Jim Wilkinson m 1.111624 Janice	b 1959
1.111625 James 1.119132 Caroline Zavitz	m Oct. 27, 1984
1.1117 David Stanley Fuller Grace Ellerby	m Dec. 26, 1921 b Mar. 25, 1894 - d Nov. 20, 1960
1.11171 Lillian Mary	b Sept. 11, 1923
1.11172 Dorothy Grace Wray	b July 16, 1928
1.11173 Thirza Ellerby	b Oct. 9, 1932
Rudy Royer m 1.11171 Lillian	b Dec. 10, 1924 - d June 21, 1975
Norman Thomas Jolly m 1.11172 Dorothy	b Dec. 20, 1923
1.111721 Donna Lynn Margaret	b Aug. 20, 1953
1.111722 Norman William	b May 7, 1956
David Mudie m 1.11173 Thirza	b July 13, 1934
1.111731 Lillian	b Aug. 2, 1962
1.111732 David	b July 24, 1967
Albin E. Hodgson m Dec. 16, 1926 1.1118 Bessie Fuller	b Oct. 28, 1901 - d July 20, 1985
1.11181 Clarence	b Dec. 9, 1927
1.11182 Marshall	b April 1, 1933
1.11183 Alma	b June 24, 1935
1.11181 Clarence Clara Brown	m July 4, 1952 b Oct. 24, 1929
1.111811 Graham Edison	b Dec. 19, 1953
1.111812 Fraser Charles	b April 12, 1955
1.111813 Stuart Henry	b Mar. 3, 1956
1.111814 Pauline Lucille	b Sept. 3, 1957
1.111815 Eleanor Irene	b Mar. 16, 1959
1.111816 Elizabeth May	b June 8, 1960
1.111811 Graham Marie Paule Desrosiers	m Aug. 11, 1979
1.1118111 Francis Edison	b June 9, 1980
1.1118112 Catherine Mary	b Sept. 10, 1983
1.1118113 Roger Wm.	b May 27, 1986

## Forest-area girl killed getting off school bus

October 11, 1983

by MARY JANE EGAN of The Observer

FOREST — A six-year-old Forest area girl was struck by a car and killed Tuesday after getting off a school bus directly in front of her County Road 7 home.

Carolyn Ruth Hodgson, daughter of Ruth and Fraser Hodgson, RR 5 Forest, had been dropped off on the edge of the road in front of her house when she was struck by a vehicle which police say had travelled onto the gravel shoulder.

The girl was dead on arrival at Forest Medical Centre.

Investigating officer Const. Ken Mills said the victim's younger sister Shirley, also a student at Kinnaird Public School, stepped off the bus ahead of her sister but was clear of the shoulder when her sister was struck.

The accident occurred at 3:45 p.m. on County Road 7, about 8 kilometres (five miles) north of County Road 12.

Const. Mills said an investigation is continuing to determine why the vehicle, which was travelling eastbound in the same direction as the schoolbus, went onto the shoulder. He said marks on the road indicate the care skidded.



1.1118121 Carolyn Ruth Hodgson

Arlene Bressette, 36, of RR 2 Forest, will appear Oct. 18 in provincial court at Forest, charged with criminal negligence in the operation of a motor vehicle.

Carolyn is survived by her parents, one sister and brothers Michael and Andrew all at home. She is also survived by grandparents Clarence and Clara Hodgson, Lake Road, Bosanquet Township, and Lanny and Audrey Brown, Welland.

Visitation will be today from 4:30 p.m. to 9 p.m. at the Lake Shore Gospel Hall, Lake Road, Bosanquet. Funeral will be 2 p.m. Thursday with burial at Ravensood Cemetery.

Lambton County Board of Education director Allen Wells said he believes this is the first local fatality involving a school bus in the past several years.

Collin Watson, principal of Kinnaird School, described the accident as a "terrible tragedy."

"Carolyn was just a super little girl."

He said 13 students were on the bus at the time "and the ones who didn't see it, know about it."

Mr. Watson said some parents are coming to the school later today to help plan a service or some type of tribute for the child.

1.111812 Fraser  
Ruth Brown

1.1118121 Caroline Ruth  
1.1118122 Shirley Elizabeth  
1.1118123 Michael  
1.1118124 Andrew  
1.1118125 Diann Mae

m May 25, 1976

b Dec. 22, 1976 - d Oct. 11, 1983  
b Nov. 19, 1978  
b July 10, 1980  
b Aug. 9, 1983  
b Aug. 25, 1985



1.111813 Stuart Betty (Elizabeth) Reid	m July 1980
1.1118131 Jonathon Stuart	b May 18, 1981
1.1118132 Jenice Elizabeth	b July 8, 1982
1.1118133 Janelle	b Aug. 3, 1983
Jeffrey Stewart	m Mar. 24, 1979
1.111814 Pauline	
1.1118141 Meredith Sarah-Ann	b Mar. 10, 1986
Christopher Wolfe	m Oct. 1985
1.111815 Eleanor	
Timothy Regis	m April 20, 1985
1.111816 Beth	
1.11182 Marshall	m May 21, 1966
Irene McCloy	b July 1, 1941
1.111821 Louise Alma	b Oct. 1967
1.111822 David Albin	b July 1970
1.111823 Paul Marshall	b May 8, 1972
Ronald Hackett	m Mar. 31, 1961
1.11183 Alma	
1.111831 John Bast	b Mar. 12, 1962
1.111832 Nancy Elizabeth	b May 6, 1963
1.111833 Brent Albin Walter	b Sept. 6, 1967
1.111834 Bryan James	b June 20, 1975
1.111831 John	m
Sharon Ross	
1.1118311 Ashley Colleen	b Nov. 24, 1985
John Maxwell	b April 2, 1880 - d Oct. 6, 1966
m Nov. 19, 1932	
1.1119 Ruth Fuller	
David Johnson	b 1847 - d 1941
m Jan. 9, 1881	
1.113 Janey Fuller	
1.1131 William	b 1882 - d 1956
1.1132 Hugh	b 1883 -d 1956
1.1133 George	d young
1.1134 Lena	b 1888 - d 1966
1.1135 Margaret	b 1890 - d 1969
1.1136 Flora	b July 8, 1892
1.1137 Newman	b 1895 - d 1982
1.1138 Beatrice	d young
1.1131 William	m
Agnes Williams	b 1884 - d 1964
1.11311 Helen	b 1918
1.11312 Maxwell	b 1920
1.11313 Pauline (T)	b 1922
1.11314 Edwin (T)	b 1922
1.11312 Maxwell	m.1.
Marguerite Green	
1.113121 Paul	b 1948
1.113122 Mary	b 1951
1.113123 Ruth-Anne	b 1954
1.113124 Donald	b 1958
1.11312 Maxwell	m.2.
Edna Reid	

1.113121 Paul Brenda Burtis	m
Douglas Cotton	m
1.113122 Mary	
1.1131221 Christine	b 1977
1.1131222 Brian	b 1979
1.113124 Donald Sheila Scheurman	m
Alastair Simmonds	m
1.11313 Pauline	
1.113131 William	b 1953
1.113132 Joan	b 1955
1.113133 Robert	b 1957
1.113133 Robert Brenda Barr	m
1.1131331 Andrea Jana	b Mar. 4, 1985
Frank Wm. Nolte	m
1.113132 Joan	
1.1131321 Natalie Ann	b Jan. 4, 1985
1.11314 Edwin Irene Neil	m
1.113141 William	b 1958
1.1132 Hugh Emily Bayton	m b 1883 - d 1976
1.11321 Charles	b 1905 - d 1983
1.11322 William	b 1907
1.11323 James	b 1908
1.11324 Ellwood	b 1909
1.11325 David	b 1915
1.11321 Charles Elma Augustine	m b 1906 - d 1983
1.113211 Carolyn	
Jack Rundle	m
1.113211 Carolyn	
1.1132111 Christopher	b 1961
1.11322 William m.1. Alice Kay m.2. Jean Turnbull	b 1907 - d 1961 b 1914
1.11323 James Arlene McPherson	m
1.113231 Gloria	b 1942
1.113232 Arthur	b 1943
1.113233 Richard	b 1946
1.113234 Daniel	b
A. Dorer	m
1.113231 Gloria	
1.113232 Arthur Roxanne M.	m
1.113233 Richard Terri S.	m

1.113231 Lori	b 1977
1.113232 Matthew	b 1981
1.113234 Daniel Stephanie C.	m
1.11324 Ellwood Clarice Sadler	m
1.113241 Lynne	
Gerry Murphy	m
1.113241 Lynne	
1.1132411 Donald	b 1963
1.1132412 Susan	b 1964
1.11325 David Janet Burns	m
Arnot Porter	b 1893 - d 1956
m	
1.1134 Lena	
1.11341 Donald	b Nov. 1919
1.11342 Audrey	b Dec. 1921
1.11343 Jeanne	b Oct. 1926
1.11341 Donald Gladys Zinn	m 1945 b May 29, 1921
1.113411 Douglas	b Feb. 1949
1.113412 David	b 1953
1.113411 Douglas Jane Armstrong	m b 1952
1.113411 Kathryn	b 1980
1.1134112 Luke	b 1983
Maurice Adams	b 1917
m 1945	
1.11342 Audrey	
1.113421 Ron	b 1948
1.113422 Sharon	b 1953
1.113423 Janice	b 1955
1.113421 Ron Cathryn Murray	m b May 14, 1954
1.1134211 Kyla	b 1979
1.1134212 Kari	b 1982
Jim Garvin	b 1951
m 1970	
1.113422 Sharon	
1.1134221 Julie	b 1975
1.1134222 James	b 1978
1.1134223 Keith	b 1982
1.1134224 Kevin	b 1984
Gary Brodie	b 1954
m 1977	
1.113423 Janice	
1.1134231 Jennifer	b 1980
1.1134232 Michael	b 1982
1.1134233 Kristen	b 1985
Donald Jeffrey	b 1925
m 1948	
1.11343 Jeanne	

1.113431 Mary	b 1953
1.113432 Janet	b 1955
1.113433 Richard	b 1956
David Jonker	b 1952
m	
1.113431 Mary	
1.1134311 Anneke	b 1975
1.1134312 Heidi	b 1978
Mark Buchanan	b 1948
m	
1.113432 Janet	
1.1134321 Neal	b 198
1.1134322 Holly	b 1983
1.113433 Richard	m
Cindy Orr	
Donald Johnson	b 1877 - d 1918
m	
1.1135 Margaret Johnson	
1.11351 Dora	b 1913 - d 1974
1.11352 Eileen	b 1914
James Charles Ruddle	b July 1, 1919
m.1.	
1.11351 Dora	
1.113511 James George	b Nov. 18, 1942
1.113512 Donald Johnson	b May 26, 1947
1.113513 John William	b Feb. 10, 1951 - d Jan. 4, 1986
James Ruddle	m.2.
Nancy	
Kacey	b Jan. 17, 1976
1.113511 James	m
Susan Lynam	b Mar. 4
1.1135111 Sarah	b Jan. 15, 1975
1.1135112 Alexandria	b Oct. 1977
1.113512 Don	m Dec. 22, 1972
Patricia Saynor	b Jan. 2, 1954
1.1135121 Catherine	b Mar. 13, 1977
1.1135122 Jennifer	b Mar. 16, 1979
1.1135123 James	b July 8, 1981
1.1135124 Elizabeth	b Sept. 19, 1984
1.113513 John	m (D)
Lynn	
Alfred (Bud) Cormack	b Dec. 2, 1909
m	
1.11352 Eileen	
Albert Brown	b Dec. 24, 1879 - d 1959
m June 23, 1924	
1.1136 Flora (Flossie)	
1.11361 Dorothy	b Aug. 26, 1925
1.11362 Kathleen	b Jan. 8, 1929
Ian Ferguson	b June 8, 1928
m Dec. 27, 1954	
1.11361 Dorothy	



**90th Birthday**

**With approximately 35 friends and relatives Mrs. Flossie Brown celebrated her 90th Birthday in Arkona, July 8. The lifetime resident of Arkona received numerous gifts including congratulations from Prime Minister Trudeau, Premier Bill Davis and Lambton MPP Lorne Henderson. 1.1136 Flossie (Johnson)**



**1.11352 Eileen and Bud Cormack**



1.3 George Fuller



1.13 Catherine Fuller



**Warwick Village Cemetery**

1.113611 Marnie	b April 1, 1958
1.113612 Patricia	b July 24, 1959
1.113613 John	b Jan. 24, 1962
1.1137 Neuman	m
Laura Jackson	b 1889 - d 1977
1.11371 Marjery	b 1927
1.114 William Fuller	b Dec. 1864 - d June 1, 1953
m.1. Dec. 23, 1888	
Margaret (Maggie) Doan	b 1860 - d 1918 (war flue)
m.2.	
Becky Tompkin	



**1.114 William Fuller Family**

**Back Row: Ida, Millie, Mamie; Front Row: William, Earl, Etta, Maggie (Doan)**



**1.1143 Ida (Spence) Hogle  
(Fuller), 1985**

- 1.114 William lived in Watford, Ontario - a storekeeper  
1910 moved to Allan, Saskatchewan and 1912 to Saskatoon.
- 1.1141 Millie b Dec. 12, 1889 - d Mar. 4, 1967  
1.1142 Mamie b Oct. 20, 1891 - d 1971  
1.1143 Ida b July 1, 1895  
1.1144 Etta Mae b 1898 - d 1980  
1.1145 Earl b April 14, 1900 - d 1975
- Fred Moog b 1888 - d Nov. 11, 1982  
m 1915  
1.1141 Millie
- 1.11411 Margaret b 1917  
1.11412 Eleanor b 1920  
1.11413 Marion b 1922  
1.11414 Mirna b 1924  
1.11415 Robert b 1927  
1.11416 Betty b 1929  
1.11417 Don b 1932
- 1.11411 Margaret m twice - No Issue
- Robert Maguire m  
1.11412 Eleanor
- David Surtees b 1922  
m  
1.11413 Marion
- 1.114131 Lynn b 1945  
1.114132 Dean b 1947
- Michael Martin b 1944  
m  
1.114131 Lynn
- 1.1141311 Kristen b 1970  
1.1141312 Grant b 1972  
1.1141313 Tod b 1976
- 1.114132 Dean m (D)  
?
- 1.1141321 Misty b 1974  
1.1141322 Marlee b 1975



Sandy Young	m
1.11414 Mirna	
1.114141 a son	d at 20 years
1.114142 Gaylene	
1.114143 Barbara	
Bob Dill	m
1.114142 Gaylene	
1.1141421 Jessica	b 1970
1.1141422 Megan	b 1972
Kevin Wagner	m
1.114143 Barbara	
1.1141431 William	b 1982
1.1141432 Max	b 1984
1.11415 Robert	m
Elinore McGraw	
Mr. Evans	m (D)
1.11416 Betty	
1.114161 Colleen	b 1956
1.114162 Gordon	b 1958
1.114163 Susan	b 1960
Richard Tew	m
1.114161 Colleen	
1.1141611 Mark	b 1980
1.1141612 Christina	b 1982
Fritz Hollenbach	m
1.114163 Susan	
1.1141631 Amy	b 1983
1.1141632 Riley	b 1985
1.11417 Don Moog	m
Shirley Reeding	
1.114171 Jan	b 1954
1.114172 Kelly	b 1956
1.114173 Michael	b Dec. 25, 1958
1.114174 *Andrew	b 1960
1.114175 Darrel	b 1962
*2nd goalie - Edmonton Oilers	
Art Brown	m
1.114171 Jan	
1.114171 Tarran	b 1981
1.114172 Tanis	b 1985
Don Stewart	m
1.114172 Kelly	
1.1141721 Jacob	b 1978
1.1141722 Jennie	b 1981
1.1141723 Kelsey	b 1983
1.114173 Michael	m
Laurie	
1.1141731 Justin	b 1980
1.1141732 Trent	b 1982
1.114174 Andrew	m
Carla	
1.1141741 Lyffa	b 1982
1.1141742 Arielle	b 1984

Frank Moody m 1.1142 Mamie 1.11421 Dorothy	b 1898 - d 1970  b 1921 - d 1982
John Gordon McCall m 1.11421 Dorothy 1.114211 Carol Elaine 1.114212 John Robert 1.114213 David Gordon 1.114214 Elizabeth May	b 1919 - d 1982  b 1946 b 1948 b 1951 b 1953
George Martin 1.114211 Carol 1.1142111 Mhiari Elaine  1.114212 John Sheila Clement 1.1142121 Mona Anne 1.1142122 Sarah Lee Ann  1.114213 David Carol Kneepkeen 1.1142131 Carly Joanna	m  b 1982  m  b 1972 b 1975  m b 1982
Ross Smith 1.114214 Elizabeth 1.1142141 Stuart Gordon	m  b 1979
Harvey Spence m.1 1.1143 Ida 1.11431 Etta Jean 1.11432 Marjorie Isobel 1.11433 Clifford Harvey 1.11434 Bernice Agnes	b Jan. 26, 1885 - d Aug. 16, 1960  b May 11, 1918 b Feb. 15, 1920 b June 26, 1926 b Mar. 14, 1929
Perle Hogle m.2. 1.1143 Ida	b 1889 - d 1968  b 1889 - d 1968
Oliver M. Greenwood m 1.11431 Etta Jean 1.114311 Janet 1.114312 Jennifer 1.114313 Peggy	b Mar. 30, 1917  b Mar. 4, 1945 b Mar. 3, 1947 b Feb. 25, 1950
Keith Molen 1.114311 Janet	m
Keith Mackrill 1.114312 Jennifer 1.1143121 Erin	m  b Dec. 1960
Mr. Maxemiuk 1.114313 Peggy 1.1143131 Spencer 1.1143132 Neil	m  b Sept. 1979 b 1983
Norman Fielding m 1.11432 Marjorie Isobel	b Oct. 8, 1919  b Oct. 8, 1919

1.114321 Glenn	b July 18, 1948 - d 1957
1.114322 Keith	b Sept. 26, 1952
John H. Moeller	b May 3, 1925
m Dec. 10, 1955	
1.11434 Bernice (Bunny)	
1.114341 Barbara	b June 21, 1957
1.114342 Jennifer	b Aug. 20, 1959
Clare Duffus	b 1889 - d 1950
m	
1.1144 Etta Mae	
1.11441 Irene	b 1922
1.11442 Dorene	b 1925
1.11443 Wm Clare	b 1926
1.11444 Shirley	b 1928
1.11445 Leslie	b 1931
1.11446 Murray	b 1935
1.11447 Frederick (Jerry)	b 1938
Robert Thompson	b 1916 - d 1985
m	
1.11441 Irene	
1.114411 James	b 1957
Theo Sasseville	m
1.11442 Dorene	
1.114421 John	b 1951
1.114422 Shirley Arlene	b 1952
1.114423 Brenda	b 1954
1.114421 John	m
Donna Knutson	
Glen Cox	m
1.114422 Shirley	
1.1144221 Michael	b 1976
1.1144222 Christopher	b 1979
1.11443 Wm Clare	m
Evelyn Salloum	b 1926
1.114431 Dwight	b 1953
1.114432 David	b 1954
1.114433 Daniel	b 1957
1.114434 Dallas	b 1960
1.114432 David	m
Kim Campbell	
Murray Potts	b 1921
m	
1.11444 Shirley	
1.114441 Janis	b 1949
1.114442 Gerri	b 1951
1.114443 Randy	b 1958
Rick Sanders	m
1.114442 Gerri	
1.11445 Leslie	m
Shirley Wyman	b 1934
1.114451 Dawn	b 1956
1.114452 James	b 1958
1.114453 Treuce	b 1961
1.114454 Gordon	b 1964

Bernie Nagel 1.114451 Dawn	m	
1.11446 Murray	m	
Mary Kurylyk	b 1939	
1.114461 Linda	b 1959	
1.114462 Carol	b 1962	
1.114463 Clare	b 1966	
1.11447 Frederick (Jerry)	m	
Marjorie Willoughby	b 1941	
1.114471 Trent	b 1963	
1.114472 Theresa	b 1965	
1.114473 Darrin	b 1969	
1.114474 Marianne	b 1974	
1.114475 Lisa	b 1978	
1.1145 Earl	m	
m.1. Neeta Beirnes (D)	b Mar. 23, 1900 - d Mar. 1, 1984	
1.11451 Clayton Howard	b Nov. 2, 1924	
1.11452 Lorraine Matilda	b Dec. 12, 1928	
1.11453 Velda Eileen	b Jan. 5, 1930	
1.11454 Ronald Delois	b Jan. 20, 1933	
m.2. ?	Separated	
1.11451 Clayton	m June 28, 1947	
Audrey McKellar	b Feb. 11, 1928	
1.114511 Carol	b Sept. 21, 1950	
1.114512 Cameron	b May 19, 1954	
Garth <del>Tasted</del>	b May 19, 1948	
m April 21, 1972	<del>to</del> Sept 22, 1950	
1.114511 Carol		
1.1145111 Kristan	b Nov. 29, 1974	
1.1145112 Kirk (T)	b Jan. 5, 1978	
1.1145113 Karen (T)	b Jan. 5, 1978	
1.1145114 Sarah	b Jan. 17, 1982	
1.114512 Cameron	m May 5, 1986	Danica
Susan Goodman		Kelsey (T)
John (Bud) Charles Rickerby	m	Lauren (T)
1.11452 Lorraine		
1.114521 Arlene June	b July 9, 1951	
1.114522 Wendy Lynn	b Aug. 30, 1955	
Richard Dykun	m	
1.114522 Wendy		
1.1145221 Michael Nicholas	b April 4, 1979	
Jack Frederick Hardisty	m	
1.11453 Velda		
1.114531 Gary Ferris	b Nov. 19, 1951	
1.114532 Donna Ann	b Sept. 30, 1953 - d in infancy	
1.114533 Joyce Darlene	b Feb. 15, 1955	
1.114531 Gary	m.1. Nov. 18, 1972	
Wendy Lavallee		
1.1145311 Gordon John	b June 20, 1974	
1.1145312 Susan Rayne	b July 14, 1976	
1.1145313 Teresa Lynn	b Sept. 12, 1978	
m.2. Catherine	May 18, 1985	

Kevin Wittaker	m
1.114533 Joyce	
1.1145331 Tanya	b Nov. 3, 1974
1.1145332 Sonya	b April 22, 1976
1.11454 Ronald	m
Sheila James	
1.114541 Russe#David	b Aug. 18, 1962
1.114542 Clare Adrienne	b Aug. 30, 1964
1.114543 James Richard	b Nov. 15, 1966
1.115 Philip Fuller	m May 11, 1891
Sara-Jane Annette	b 1869; d 1942
1.1151 Orville	b 1902; d 1974
1.116 Joseph Fuller	m Dec. 30, 1892
Annie Doan	b 1874; d 1953
1.1161 Mabel	b April 22, 1894; d 1984
1.1162 Bertie (Alberta May)	b Dec. 4, 1894; d Dec. 8, 1979
1.1163 Lottie	b Sept. 14, 1897
1.1164 Wilfred	b July 14, 1899; d April 19, 1985
1.1165 Basil	b May 21, 1901; d 1977
1.1166 Minnie	b Feb. 3, 1904
1.1167 George	b Dec. 11, 1906
1.1168 Frank (Francis Clark)	b May 26, 1908



**August 1911, 1.116 Joe Fuller Home  
Blind Line, Warwick Twp.  
Minnie, Bertie, Mabel, Lottie, Frank, Joe and Annie, George, Basil,  
Wilfred with horses Mac and Doll**



**1.116 Joe Fuller Family**

**Back Row: Joe, George, Frank, Basil; Middle Row: Ivy, Minnie, Lottie, Wilfred; Front Row: Mabel, Annie (Doan), Bertie**

1.1169 Ivy

b Dec. 19, 1911

1.116A Joseph

b Mar. 22, 1916

Roy Teeple

b Aug. 20, 1889; d Nov. 21, 1961

m

1.1161 Mabel

1.11611 Leonard

b Nov. 3, 1913; d Feb. 19, 1914

1.11612 Elfred

b Jan. 17, 1915; d Mar. 26, 1915

1.11613 Verla

b May 27, 1916

1.11614 Carl

b Aug. 20, 1918; d Dec. 20, 1923

1.11615 Jean

b Nov. 24, 1920; d Mar. 23, 1935

1.11616 Lorne

b May 12, 1923

1.11617 Ruth

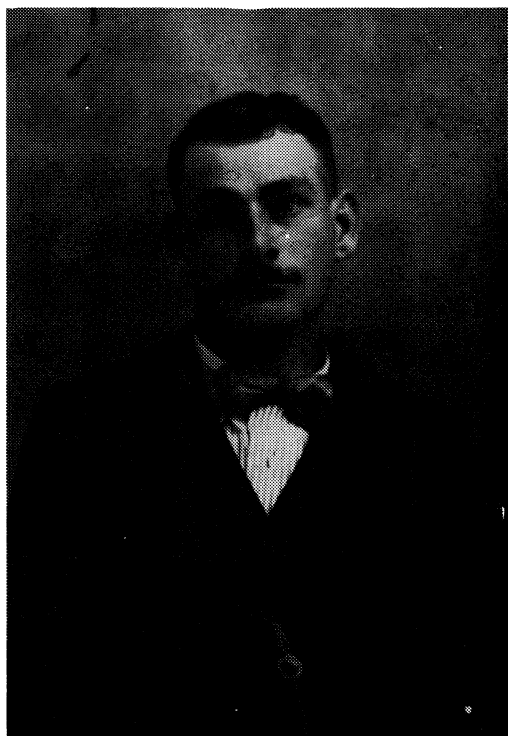
b Oct. 1, 1926

1.11618 Wilbert

b Mar. 7, 1931; d July 8, 1940

1.11619 Evelyn

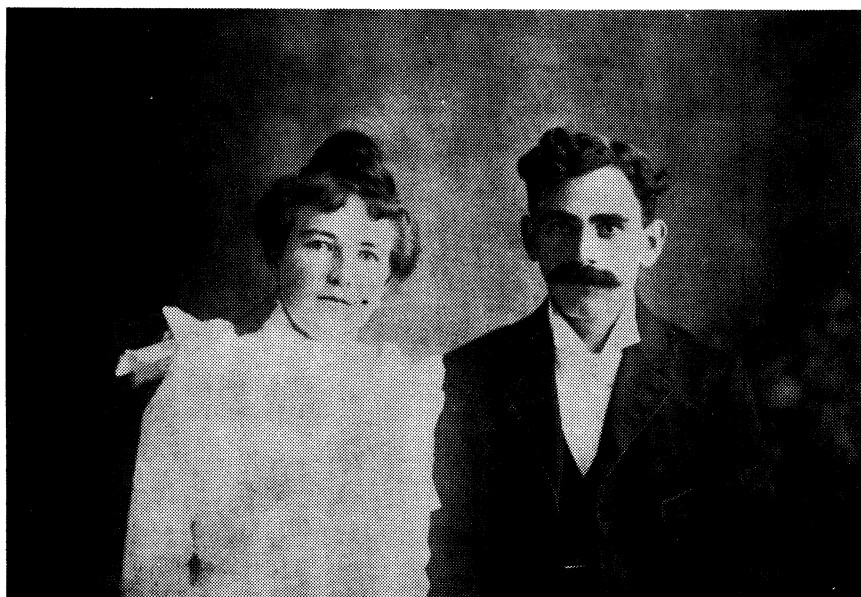
b April 24, 1934



**1.11A Samuel Fuller**



**1.116 Joe Fuller, Annie (Doan) with Ursala and 1.11616 Lorne Teeple**



**Lexia (Spalding) and 1.118 Tom Fuller**

Wm. Hamilton	b Feb. 20, 1916
m	
1.11613 Verla	
1.116131 Martha Jean	b Nov. 20, 1946
1.116132 Shirley Verlyn	b April 20, 1948
1.116133 Marilyn Ann	b Feb. 12, 1950
1.116134 David Wm	b April 6, 1952
1.116135 Nancy Louise	b July 21, 1954
1.116136 Philip Henry	b Aug. 23, 1956
Robert James Campbell	b Nov. 11, 1946
m	1.116131 Martha Jean
1.1161311 James Robert	b Oct. 12, 1968
1.1161312 Jonathan Neal	b May 29, 1973
1.1161313 Cheralayn Christin	b Sept. 18, 1975
Godfrey Godwyn Craig	b Nov. 7, 1946
m	
1.116132 Shirley Verlyn	
1.1161321 Brandon Scott	b Feb. 2, 1973
1.1161322 Shanda Lee	b June 5, 1975
1.116133 Marilyn Ann	m
1. Mark Gold (D)	
2. David Jones	
1.1161331 Rob Gold	b May 22, 1969
1.1161332 Jeff Gold	b Oct. 2, 1973
1.116134 David Wm	m
Sheila Lynn Jenkins	
1.1161341 Daryl James	b April 1, 1983
Wayne MacDonald	m
1.116135 Nancy Louise	
1.116136 Philip Henry	m
Myrna Doreen Willsey	b Nov. 17, 1959
1.1161361 Meredith Anne	b Sept. 16, 1980
1.1161362 Aaron Philip Henry	b Aug. 4, 1983



1.11616 Lorne Teeple	m
Ursala Rosser	b Jan. 16, 1928
1.116161 Carl Allen	b April 25, 1954
1.116162 Mark Elroy	b Sept. 21, 1956
1.116163 Ralph Edward	b June 29, 1958
1.116164 Larry Albert	b Sept. 4, 1959
1.116165 George Rosser	b Mar. 16, 1964
1.116166 Glen Charles	b July 29, 1967
1.116161 Carl Allen	m
Kimberley Rose Issac	b July 26, 1956
1.1161611 Amy Nicole	b Nov. 27, 1976
1.1161612 Carl Isaac	b Sept. 4, 1979
1.1161613 Kristen Danielle	b April 3, 1983
1.116162 Mark Elroy	m
Donna Jane Fisher	b Oct. 16, 1956
1.116163 Ralph Edward	m
Lori Elisabeth Gordon	
1.116164 Larry Albert	m
Cheryl Ann Green	b Sept. 5, 1960
1.1161641 September Dawn	b Sept. 24, 1982
1.1161642 Caleb Roy	b Feb. 13, 1984
Ronald Frederick Williams	b Dec. 7, 1926
m	
1.11617 Ruth	
1.116171 Ronald Terrance	b Oct. 1, 1945
1.116172 Lois Ruth	b July 27, 1948
1.116173 Ricky John (T)	b April 14, 1956
1.116174 Randy James (T)	b April 14, 1956
1.116175 Robert Dean	b Nov. 11, 1959
1.116171 Ronald	m
Agnes Remkje Visser	b Nov. 27, 1947
1.1161711 Ronald John	b June 30, 1971
1.1161712 Garry Lee	b Aug. 8, 1973
James Allan Wood	b Sept. 8, 1948
m	
1.116172 Lois Ruth	
1.1161721 Brett	b Jan. 30, 1974
1.1161722 Chad Anthony	b Aug. 21, 1976
1.116173 Ricky John	m
Sandra Elizabeth Ford	b Aug. 23, 1951
1.116173 Travis John	b Mar. 28, 1983
1.116174 Randy James	m
Leah Alice Crozier	b July 9, 1954
1.1161741 Christie Lee	b July 28, 1983
1.116175 Robert Dean	m
Wendy Marian Kauffeldt	b May 29, 1961
1.1161751 Joshua Robert	b May 27, 1982
Ernest Wm Belch	b Mar. 25, 1935
m	
1.11619 Evelyn	
1.116191 Karen Elaine	b May 12, 1958
1.116192 David Ernest	b July 13, 1961
1.116193 Wm Daniel	b Oct. 2, 1962

Clarence Smith	b Oct. 19, 1895; d Jan. 12, 1959
m	
1.1162 Bertie Fuller	b Dec. 4, 1895; d Dec. 8, 1979
1.11621 Dorothy	b June 13, 1918
1.11622 Donald	b Oct. 11, 1920; d Mar. 13, 1982
1.11623 Richard	b Dec. 14, 1929; d Aug. 20, 1948 (car accident)
1.11624 Betty	b Sept. 2, 1932
1.11625 Kathleen	b Aug. 5, 1934
Wayne Griggs	b Feb. 22, 1921
m May 26, 1984	
1.11621 Dorothy	
1.11622 Donald	m
Virginia	b Aug. 28, 1922; d June 7, 1984
1.116221 Connie Sue	b July 16, 1943
1.116222 Barbara	b Mar. 9, 1947
1.116223 Richard	b July 27, 1949
1.116224 Donald	b Sept. 30, 1951
Wes Wesenick	b Mar. 29, 1939
m	
1.116221 Connie	
1.1162211 Susan	b June 8, 1963
1.1162212 David	b May 30, 1964
Alfred Lavire	b Aug. 1, 1959
m	
1.1162211 Susan	
Gary Wereley	b Aug. 9, 1947
m	
1.116222 Barbara	
1.1162221 Bethany	b Feb. 13, 1969
1.116223 Richard	m
Dorothy (D)	
1.1162231 Martin	b May 4, 1981
1.116224 Donald	m
Jean	b Oct. 28, 1951
1.1162241 Ryan	b Jan. 18, 1977
Charles Lefebvre	b Dec. 23, 1932
m Aug. 15, 1953	
1.11624 Betty	
1.116241 Debbie	b Oct. 18, 1954
1.116242 Denise	b Mar. 28, 1957
1.116243 Victoria	b Nov. 6, 1958
1.116244 Lisa (T)	b Oct. 20, 1960
1.116245 Lorie (T)	b Oct. 20, 1960
1.116246 Charles	b Sept. 15, 1962
1.116247 Marc (T)	b Jan. 20, 1969
1.117248 Marci (T)	b Jan. 20, 1969
Mike Peterson	m
1.116241 Debbie	
1.1162411 Katie Jo	
1.1162412 Tyler	b Oct. 1984
David Wood	m
1.116242 Denise	
1.1162421 Derek	b Nov. 9, 1979
1.1162422 Nicole	b Mar. 30, 1981

Terry Towns 1.116243 Victoria 1.1162431 T.J.	m
? 1.116244 Lisa 1.1162441 Andrea	m
Ross Green 1.116245 Lorie	m Aug. 15, 1981
1.116246 Charles Vel	m
Robert Miller m June 19, 1955 1.11625 Kathleen 1.116251 Robert 1.116252 Cindy	b June 4, 1931  b Nov. 17, 1956 b Jan. 23, 1958
1.116251 Robert Debbie 1.1162511 Andrea Megan 1.1162512 Alyssa	m May 15, 1982 b Feb. 7, 1961 b June 30, 1983 b Oct. 9, 1984
Bruce McCoy 1.116252 Cindy 1.1162521 Katie Jean	m May 20, 1978  b Dec. 11, 1984
Wilbert Field m.1. 1.1163 Lottie Fuller 1.11631 Ruby 1.11632 Bert (Wilbert Gordon)	b 1893; d 1922  b 1921 b 1922
1.1171 George Marsh m.2. 1.1163 Lottie Fuller 1.11633 Elsie 1.11634 Muriel 1.11635 David	b 1895; d 1969  b April 21, 1929 b Mar. 23, 1932 b 1934; d 1981
Ken Mitchell 1.11631 Ruby 1.116311 Marnie 1.116312 Allan	m  b Sept. 1947 b June 6, 1949



**Back Row: 1.1171 George Marsh, Ruby; Front Row: David, 1.1163 Lottie (Fuller), Bert, Muriel, Elsie**

Dr. Chris Watts	m Aug. 1969
1.116311 Marnie	
1.1163111 Caroline	b Dec. 14, 1972
1.1163112 Stephanie	b Dec. 12, 1975
1.1163113 Jonathon	b June 7, 1980
1.116312 Allan	m
Nancy Smith	
1.1163121 Jennifer Elizabeth	b April 27, 1979
1.1163122 David	b May 21, 1981
1.11632 Wilbert Gordon Field	m
Minnie Gertrude Rosser	b April 19, 1926
1.116321 Ronald Gordon	b Mar. 21, 1951
1.116322 Brian George	b Nov. 14, 1954
1.116323 Carol Ann	b July 15, 1956
1.116324 Janet Lynn	b July 12, 1967
1.116321 Ronald	m
Sharon Jean Sutton	b April 12, 1955
1.1163211 Derek Emery	b Sept. 22, 1980
1.1163212 Berton David	b Oct. 2, 1983
1.116322 Brian	m
Karen Lyn Fryday	b Feb. 8, 1957
David James McKee	b Dec. 13, 1956
m	
1.116323 Carol Ann	
Roy Graham	m
1.11633 Elsie	
1.116331 Ann	
1.116332 Kathy	b 1953
1.116333 David	b 1955
1.116334 Stephen	b 1956
1.116335 Marsha	b 1958
1.116336 Jeffrey	b 1961
1.116337 Glen	b 1967

David Rae	m
1.116331 Ann	
1.1163311 Kelly	b 1976
1.1163312 Brian	b 1979
1.1163313 Kristy	b 1982
Peter Huk	m
1.116335 Marsha	
1.1163351 Stephen (T)	b Sept. 8, 1981
1.1163352 Michael (T)	b Sept. 8, 1981
1.1163353 Paul	b Aug. 1984
1.116336 Jeffrey	m
Judy	
Walter Bulbeck	m
1.11634 Muriel	
1.116341 Greg	b 1964
1.116342 Ann Marie	b 1967
1.11635 David	m
Sue Eves	
1.116351 Gerry	b 1954
1.116352 Andrew	b 1955
1.116353 Daniel	b 1957
1.116354 Jeanne	b Dec. 1958
1.116351 Gerry	m Sept. 1983
Rita	
1.1163511 Marie-Jeanne	
1.1163512 Dounia	
1.116352 Andrew	m
Bonnie	
1.1163521 Jennifer	
1.1163522 Jacquelyn	
1.116353 Daniel	m 1984
Liza	b Dec. 5, 1958
1.1163531 Jeanne	
1.1164 Wilfred	b July 14, 1899; d April 19, 1985
m June 24, 1924	
Edythe Cousins	b Nov. 3, 1903
1.11641 Wilfred Douglas	b Jan. 10, 1929
1.11642 Marguerite	b Oct. 14, 1935
1.11643 Gordon	b 1933; d 1933 (10 mths) pneumonia
1.11641 Wilfred Douglas	m Feb. 18, 1950
Evangeline Eastman	b Nov. 24, 1929
1.116411 Louise	b Dec. 27, 1950
1.116412 Gordon	b Nov. 16, 1952
1.116413 Mary	b Dec. 20, 1958
Gordon Teetzel	b Mar. 24, 1951
m April 20, 1973	
1.116411 Louise	
1.1164111 Nathan	b Aug. 25, 1979
1.1164112 Ian	b July 1, 1981
1.116412 Gordon	m June 7, 1975
Janice Moore	b Nov. 29, 1954
1.1164121 Katie	b Nov. 8, 1982

Steve Pike	b Dec. 19, 1959
m July 8, 1978	
1.116413 Mary	
1.1164131 Jennifer	b Oct. 1, 1979
1.1164132 Elisa	b Feb. 10, 1982
1.1164133 Melody	b July 28, 1984
Robert Crawford	b Aug. 23, 1933
m June 15, 1957	
1.11642 Marguerite	
1.116421 Kathy	b Nov. 2, 1959
1.116422 Patricia	b Mar. 21, 1962
1.116423 Janice	b May 11, 1967
Victor Bresett	b June 24, 1959
m Oct. 6, 1979	
1.116421 Kathy	
1.1165 Basil Fuller	m
Winnie Gilbert	b Nov. 12; d May 9, 1984
1.11651 LaVerne	b Aug. 19, 1927
1.11652 Eugene	b Aug. 21, 1928
1.11653 Robert	b 1929
1.11654 Marjorie	b Mar. 25, 1937
1.11651 LaVerne	m Aug. 23, 1947
Rosemary Helen Watson	b May 22, 1927
1.116511 Sherry Ann	b June 26, 1952
1.116512 Steven Frances	b Nov. 25, 1956
1.116513 Susan Kay	b July 22, 1961
1.116514 Sandra Kelly	b April 20, 1963
Herbert Smith	b July 29, 1954
m July 30, 1976 (D Aug. 29, 1981)	
1.116511 Sherry	
1.116512 Steve	m Dec. 30, 1978
Virginia Lou Tallent	b April 27, 1959
1.1165121 Lindsay Raye	b April 21, 1984
Jeffrey Scott McPherson	b Sept. 18, 1961
m July 25, 1980	
1.116513 Susan Kay	
1.1165131 Jennifer Kay	b Sept. 8, 1981
1.1165132 Jessica Leigh	b Feb. 17, 1983
Gilbert Craig Cobb	b Jan. 27, 1961
m May 20, 1983	
1.116514 Sandra Kelly	
1.1165141 Zackary Taylor	b Sept. 18, 1984
1.11652 Eugene	m April 21, 1951
Donna	b Nov. 2, 1931
1.116521 Deborah	b Dec. 27, 1951
1.116522 Darrel	b Oct. 23, 1955
1.116523 Denise	b Dec. 16, 1961
Michael W. Powell	b Mar. 4, 1948
m May 1, 1971	
1.116521 Deborah	
1.1165211 Amy Jo	b Mar. 12, 1972
1.1165212 Michael Patrick	b Mar. 17, 1975

1.116522 Darrel Peggy Auten	m July 10, 1982
1.1165221 Aspen Page	b Nov. 4, 1982
?	m July 1, 1978
1.116523 Denise	
1.1165231 Anthony Ivan	b May 6, 1978
1.1165232 Sarah Michelle	b Oct. 4, 1981
1.11653 Robert Minnie Tripp	m June 5, 1976 b 1931
1.116531 Crystal	b Sept. 21, 1954
Dwayne Burkett	m
1.116531 Crystal	
1.1165311 Scott	
Edward England	m June 1, 1955
1.11654 Marjorie	
1.116541 Diana L.	b Mar. 6, 1954
1.116542 Pam J.	b Sept. 4, 1956
1.116543 Sandra J.	b Oct. 23, 1960
1.116544 Paul D.	b Aug. 1, 1965
Randy VanWormer	m Jan. 11, 1970
1.116541 Diana	
1.1165411 Jennifer	b Nov. 22, 1970
1.1165412 Stephanie	b Jan. 16, 1973
1.1165413 Garrett	b Jan. 22, 1974
Clinton Zahn	m June 11, 1976 (D)
1.116543 Pam	
1.1165421 Daniel	b Nov. 26, 1979
Lawrence Taylor	b June 22, 1953
m June 19, 1980	
1.116543 Sandra	
1.1165431 Jason	b June 15, 1982
Floyd Wight	b Mar. 31, 1901; d Aug. 23, 1969
m Sept. 1, 1923	
1.1166 Minnie Fuller	
1.11661 Orville	b Feb. 15, 1925; d Feb. 15, 1925
1.11662 Mildred	b Oct. 6, 1926
1.11663 Ronald	b Sept. 22, 1929
1.11664 Lawrence	b Nov. 6, 1931
1.11665 Marjorie	b Aug. 5, 1935
1.11666 Wilfred	b Oct. 29, 1940
Arnold Eastman	b Feb. 7, 1925
m July 15, 1950	
1.11662 Mildred	
1.116622 Kenneth	b Nov. 30, 1951; d Aug. 11, 1965
1.116622 Ronald	b Mar. 28, 1954
1.116623 Roger	b Nov. 10, 1955
1.116624 Connie	b Jan. 12, 1959
1.116625 Carol	b Dec. 8, 1962



**Back Row: Ronald, Mildred; Front Row: 1.1166 Minnie (Fuller), Wilfred, Floyd Wight, Marjorie, David**

1.116633 Ronald	m
Dorothy Marsh	b April 10, 1935
1.116631 Ronald	b Oct. 22, 1956
1.116632 Dianne	b Dec. 17, 1959
1.116633 David	b Aug. 3, 1960
1.116634 Marilyn	b Dec. 27, 1963
1.116635 Gordon	b Aug. 16, 1965
1.116631 Ronald	m
Cindy Shewell	
1.1166311 Jodie	b June 4, 1982
Noel Scott	m
1.116632 Dianne	
1.1166321 Danielle	b June 1984
1.11664 Lawrence	m Oct. 8, 1955
Grace Simpson	b Nov. 30, 1935
1.116641 Kathy	b Aug. 18, 1956
1.116642 Nancy	b July 25, 1958
1.116643 Gary	b Aug. 5, 1959
1.116644 Becky	b May 19, 1963
1.116645 Karen	b Feb. 2, 1970
Norman MacIntosh	m Aug. 24, 1974
1.116641 Kathy	
1.1166411 Holly	b Mar. 10, 1976
1.1166412 Scott	b Nov. 26, 1978
1.1166413 Hilary	b Aug. 21, 1983
Stephen Lochart	m
1.116642 Nancy	
1.1166421 Christie	b Dec. 16, 1981
1.1166422 Craig	b June 26, 1983
1.11643 Gary	m May 7, 1983
Cheryl Ellen	



Tom McKinnley 1.11644 Becky	m July 2, 1983
Lorne Willoughby m Aug. 18, 1956 1.11665 Marjorie	b Feb. 4, 1934
1.116651 David	b July 8, 1959
1.116652 Cindy	b Oct. 29, 1966
1.116653 Judy	b Dec. 30, 1968
1.11666 Wilfred Connie Landry	m Aug. 17, 1963 b Sept. 28, 1940
1.116661 Pierre	b May 14, 1965
1.116662 Jacque	b Oct. 9, 1966
1.116663 Mark	b Sept. 28, 1968
1.1167 George Fuller Gladys Kersey	m April 17, 1929
1.11671 Harold	b Dec. 13, 1930
1.11672 Richard	b Sept. 29, 1937; d June 18, 1955 (drowned)
1.11673 Paul	b Sept. 19, 1941
1.11671 Harold m.1. Christina Shoulders	Jan. 1951 (D)
1.116711 Rosalie (T)	b Nov. 7, 1951
1.116712 John (T)	b Nov. 7, 1951
m.2. Lorenda Crick	1974
1.116713 Beth	b May 1968
1.116714 Alen	b Nov. 1969
1.116715 Lorenda	b Aug. 1971
1.116716 Rachel Ann	b Feb. 14, 1979
James McLennan	m
1.116711 Rosalie	
1.1167111 Shawn	b 1976
1.1167112 Christopher	b 1978
1.116712 John Becky Stevens	m
1.1167121 Julie	b Sept. 8, 1975
1.1167122 Jeremy	b Mar. 1978
1.11673 Paul m.1. Betty Townsend	(D)
1.116731 James	b Feb. 15, 1965
1.116732 Richard	b May 1967
1.116733 William	b June 29, 1972
1.116734 Betty Jean	b Jan. 29, 1974
1.11673 Paul m.2. Frances Neal	Jan. 1984
1.1168 Francis Clark (Frank) m.1. Eva Collins (widow)	b May 26, 1908 b April 23, 1896; d May 1979
1.11681 Betty Collins	
1.11682 Jay Collins	

m.2. Ellen (widow)	b Feb. 13, 1921; d April 23, 1982
m.3. Mary Jane (widow)	b 1926
Note: Ellen's son Larry married Mary Jane's daughter Rhonda.	
Reg Ingerson	b Jan. 19, 1912 (overseas in war - never returned)
m.1. Oct. 9, 1935 1.1169 Ivy Fuller	b Dec. 19, 1911
Frederick Winter m.2. April 12, 1971 1.1169 Ivy	b Dec. 12, 1910; d June 1986
1.116A Joseph Fuller	m 1938
Gladys McLeod	b Feb. 26, 1920
1.116A1 Audrey	b June 23, 1939
1.116A2 Eleanor	b Aug. 10, 1942
1.116A3 Rosemary	b Sept 26, 1944
1.116A4 Frank	b Aug. 10, 1951
Basil Richardson	m Aug. 31, 1957
1.116A1 Audrey	
1.116A11 Judy	b Oct. 3, 1958
1.116A12 Rhonda	b Nov. 7, 1959
1.116A13 Robin	b Oct. 21, 1963
Chris Williams	
1.116A11 Judy	
Fred Ardiel	m 1959
1.116A2 Eleanor	
1.116A21 Brenda	b 1959
1.116A22 Joey (boy)	b 1962
1.116A23 Lisa	b 1965
Robert Munday	m Nov. 17, 1962
1.116A3 Rosemary	
1.116A31 Julie	b Nov. 25, 1963
1.116A32 Robert	<u>b Mar. 15, 1965</u>
Thomas Marsh	b May 23, 1855; d Feb. 14, 1928
m Sept. 5, 1894	
1.117 Sarah Fuller	
1.1171 George	b Nov. 7, 1895; d May 22, 1969
1.1172 Wilbur	b Aug. 26, 1897; d Nov. 12, 1970
1.1173 Milton	b July 20, 1899; d Nov. 30, 1978
1.1174 Herbert	b Dec. 9, 1901; d May 25, 1973
1.1175 Myrtle	b Dec. 21, 1905
1.1176 Sherman	b July 1, 1908
1.1177 Winnie	b Feb. 23, 1912
(Sarah Alice Winnifred)	



**Back Row: Milton, Herb, Sherman, Wilbur; Front Row: George, Winnie, Sarah (Fuller), Myrtle**

1.1171 George Marsh	m
1.1163 Lottie Fuller	
1.11711 Elsie (1.11633)	b April 21, 1929
1.11712 Muriel (1.11634)	b Mar. 23, 1933
1.11713 David (1.11635)	b 1934; d 1981

See 1.1163 Lottie Fuller for extension of family.

1.1172 Wilbur Eynon Marsh	m
Mary Elva Waun	b Oct. 7, 1901; d Nov. 12, 1982
1.11721 Franklin Thomas	b Dec. 27, 1922; d Oct. 3, 1974
1.11722 Elva Jean	b Dec. 17, 1924
1.11723 Stanley Wilbur	b June 14, 1927
1.11724 Stuart Rutherford	b Nov. 11, 1929
1.11725 Harold George	b Dec. 7, 1936

1.11721 Franklin Grace Turnbull	m
1.117211 Howard	b July 13, 1947; d July 7, 1980
1.117212 Beverly	b June 1948
1.117213 Gordon	
1.117214 Barbara	
1.117215 Brenda	b Oct. 7
1.117216 Cheryl	
1.117217 Deborah	b May 18, 1962
John Sherlock	b Jan. 30, 1916; d Dec. 9, 1970
m	
1.11722 Elva Jean	
1.117221 Linda	b July 22, 1947
1.117222 John	b June 17, 1949
1.117223 Laurie	b Feb. 10, 1955
1.11723 Stanley	m
Mary Dewar	b June 2, 1929
1.117231 Constance	b Mar. 30, 1958
1.117232 Philip	b Sept. 19, 1963
1.11724 Stuart	m
Dorothy Stoner	b June 13, 1932
1.117241 Gary	b Nov. 21, 1950
1.117242 James	b Dec. 22, 1952
1.117243 Marilyn	b Mar. 20, 1954
1.117244 Robert	b April 16, 1958
1.117245 Stephen	b Sept. 15, 1960
1.11725 Harold	m
Dorothy Thompson	b May 29, 1937
1.117251 James	b Dec. 17, 1957
1.117252 Janice	b May 18, 1961
1.117253 Douglas	b Dec. 19, 1963
1.117254 Richard	b Dec. 29, 1965
1.1173 Milton Marsh	m
Alma Deering	b Jan. 7, 1902
1.11731 Robert	b Nov. 8, 1931; d Dec. 22, 1969
1.1174 Herbert Marsh	m Sept. 2, 1925
Lila Waun	b Oct. 16, 1905
1.11741 Donald	b Oct. 6, 1927
1.11742 Grace	b May 6, 1930
1.11743 Margaret	b Sept. 22, 1940
1.11741 Donald	m May 14, 1949
Marion Klemm	
1.117411 Paul	b Mar. 18, 1950
1.117412 David	b June 13, 1952
1.117413 Timothy	b Aug. 15, 1956
1.117411 Paul	m July 1, 1982
Lisa	
1.1174111 Lisa	b Dec. 1, 1982
1.117412 Daivd	m Sept. 6, 1975
Jeannie Webb	
1.1174121 Benjiman	b June 1, 1980
1.1174122 Rachel	b Nov. 29, 1981

Vernon Joel m 1.11742 Grace	b April 24, 1953
1.117421 Dorothy	b April 21, 1955
1.117422 Debbie	b Oct. 12, 1957
1.117423 Michael	b Feb. 9, 1960
Michael Walker 1.117422 Debbie	m Dec. 1982
Herman Kampert m.1. D 1975 1.11743 Margaret	b Sept. 27, 1958
1.117431 Christopher	b Dec. 4, 1959
1.117432 Corey	b Dec. 2, 1961; d May 19, 1964
1.117433 Sherry	b July 10, 1963
1.117434 William	b April 21, 1966
Joe Shearer 1.11743 Margaret	m.2. Dec. 23, 1977
Benjamin Harrison Landis m June 14, 1933 1.1175 Myrtle Susanna Marsh	b Feb. 3, 1905
1.11751 Earl	b April 6, 1934
1.11752 Ruth	b Dec. 31, 1935
1.11753 Elsie	b Aug. 4, 1937
1.11754 Evelyn	b May 15, 1939
1.11755 George	b Oct. 2, 1941
1.11756 Winnifred	b Mar. 2, 1944
1.11751 Earl Harrison Landis Naomi Schaffer	m Aug. 21, 1959
1.117511 Benjamin Earl	b Mar. 16, 1961
1.117512 Rebekah Sue	b June 29, 1963
1.117513 Deborah Lou	b Jan. 29, 1967
1.117514 Daniel Raymond	b April 24, 1969
1.117515 Mary Beth	b Sept. 28, 1971
David Carl Stiefler m Oct. 18, 1975 1.11752 Ruth	b Oct. 9, 1933
Alan Francis Dyer 1.11753 Elsie	m June 14, 1958 (live in Sheffied, Australia)
1.116531 Timothy Alan	b Aug. 14, 1960
1.117532 Susan Pamela	b Mar. 26, 1962
1.117533 John Franklin	b Dec. 7, 1963
1.117534 Barbara Marie	b Sept. 14, 1966
1.117531 Timothy m Merron Keir	m Dec. 17, 1983
Brett Whitely 1.117532 Susan	m Oct. 13, 1984
Peter Mosse 1.11754 Evelyn	m April 14, 1963
1.117541 David	b Mar. 15, 1964
1.117542 Kerry Arnold	b Oct. 18, 1966
1.117543 Carl Lynn	b Mar. 2, 1969
1.117544 Sarah Jane	b Aug. 1, 1973

1.11755 George Marsh Landis Jean Ann Legel	m July 8, 1967
1.117551 Philip George	b July 8, 1969
1.117552 Bonnie Sue	b Sept. 4, 1970
1.117553 Lora Jean	b April 11, 1972
1.117554 Jonathon Alan	b Nov. 15, 1973
1.117555 Andrew Scott	b Oct. 15, 1975
Ernest Roy Heims	m June 15, 1963
1.11756 Winnifred May Landis	
1.117561 Mark Bradley	b June 12, 1964
1.117562 Sharon Renee	b June 6, 1966
1.1176 Sherman Marsh May Bartley	m.1. Sept. 1932 b Jan. 1910 d Nov. 1950
1.11761 Dorothy May	b April 10, 1935
1.11762 Ethel Jeanne	b Feb. 13, 1938
m.2. Betty Anderson	May 1953 D 1975 b Aug. 8, 1934
1.11763 Betty Lynne	b Mar. 2, 1956
1.11764 Thomas Andrew	b Dec. 1958; d 1964
1.11663 Ronald Floyd Wight m Dec. 10, 1955	b Sept. 22, 1929
1.11761 Dorothy	
1.117611 Ronald Albert	b Oct. 22, 1956
1.117612 Dianne May	b Jan. 17, 1959
1.117613 David Lawrence	b Aug. 3, 1960
1.117614 Marilyn Louise	b Dec. 27, 1963
1.117615 Raymond Gordon	b Aug. 17, 1965
1.117611 Ronald Cynthia Dawn Shewell	m Aug. 11, 1978 b Mar. 5, 1959
1.1176111 Jodie Lynne	b June 4, 1982
Noel Vasco Scott m June 7, 1980	b June 5, 1944
1.117612 Dianne	
1.1176121 Danielle Joy	b June 20, 1984
Alexander Robert Pearson m Mar. 1957	b Mar. 30, 1932
1.11762 Jeanne	
1.117621 Robert John	b Oct. 3, 1957
1.117622 Michael James	b Nov. 14, 1959
1.117623 Joseph Phillip	b April 17, 1961
1.117624 Sharon Louise	b Oct. 13, 1962
1.117621 Robert Susan Wood	m Oct. 21 b May 25
1.1176211 John Isaac	b Oct. 24, 1980
1.117622 Michael Jerrine Hill	m
1.1176221 Matthew James	b June 15, 1985
David Jefferson 1.11763 Lynne	m.1. July 1974
1.117631 Tracy Lynn	b Feb. 17, 1975
1.117632 Danny	b April 7

Jim Hopper	m.2.
1.11763 Lynne	
1.117633 Chrystal	b Aug. 18, 1980
1.117634 Tonya	b June 19, 1982
William Leslie Ireland	b July 12, 1909
m	Sept. 12, 1934
1.1177 Winnie	
1.11771 Howard Leslie	b Oct. 6, 1936
1.11772 Helen Myrel	b April 12, 1938
1.11773 David Milton	b June 25, 1940
1.11771 Howard	m Oct. 15, 1955
Gretta MacDonald	
1.117711 Karen Ruth	b April 8, 1965
1.117712 Timothy Howard	b Nov. 7, 1970
Brian Farrelly	b Dec. 20
m Sept. 15, 1979	
1.117711 Karen	
1.1177111 Rebecca Ruth	b Nov. 17, 1984
Leslie Gordon Ford	b Aug. 15
m Aug. 15, 1964	
1.11772 Helen	
1.117721 Elizabeth Anne	b Nov. 2, 1969
1.117722 Kevin	b June 22, 1975
1.11773 David	m Mar. 17, 1968
Lois Elaine Stewart	b July 29
1.117731 David	b April 27, 1969
1.117732 Deborah Sue	b July 6, 1970
1.117733 Dawn Ruth	b Sept. 26, 1972
1.117734 Daniel Paul	b Nov. 14, 1974
1.118 George Thompson Fuller	m June 6, 1908
Alexis Spalding	b 1878; d 1950
1.1181 Elgin	b 1902; d 1966
1.1182 Elsie	b 1905; d 1911
1.1183 Merle	b 1907; d 1972
1.1181 Elgin	m
Elva Dearing	b 1912
1.11811 Norma	b 1940
1.11812 Lois	b 1944
Kennedy	m
1.11811 Norma	
1.118111 Jefferson Scott	b 1964
1.118112 Glenn Todd	b 1966
1.118113 Nancy Joye	b 1970
1.118114 Jennifer Lynn	b 1972
Garnham	m
1.11812 Lois	
1.118121 Benjamin Mark	b 1976
1.118123 Rachel Naomi	b 1978

Carlton Manders	b 1902; d 1977
m	
1.1183 Merle	
1.11831 Louise	b 1931
1.11832 Bruce	b 1933
1.11833 Ruth-Ann	b 1939
1.11834 Elsie	b 1941
Wein	m
1.11831 Louise	
1.118311 Barbara	
1.118312 Paul	
1.11832 Bruce	m
?	
1.118321 Gary Bruce	b 1953
1.118322 Ricky Allen	b 1955
1.118323 Brian Douglas	b 1956
Gardiner	m
1.11833 Ruth-Ann	
1.118331 Terry	
1.118332 Dale	
Benedict-Hodgins	m
1.11834 Elsie	
1.118341 Kevin	
1.118342 Cathy	
1.118343 Tracy	
1.118344 Connie	b 1967
Robert Gault	b 1869; d 1960
m May 1, 1895	
1.119 Hannah Fuller	
1.1191 Basil	b Nov. 9, 1895
1.1192 Leapha Alice	b 1899; d 1974
1.1193 Mary	b 1902
1.1194 Beatrice	b 1912
1.1195 Robert George	b 1915
1.1191 Basil	m Oct. 15, 1938
Hazel Yorke	b Dec. 10, 1905; d Oct. 1, 1972
1.11911 Thomas	b Nov. 14, 1946
1.11912 Norma	b June 6, 1939
1.11913 Beverley	b Feb. 22, 1938





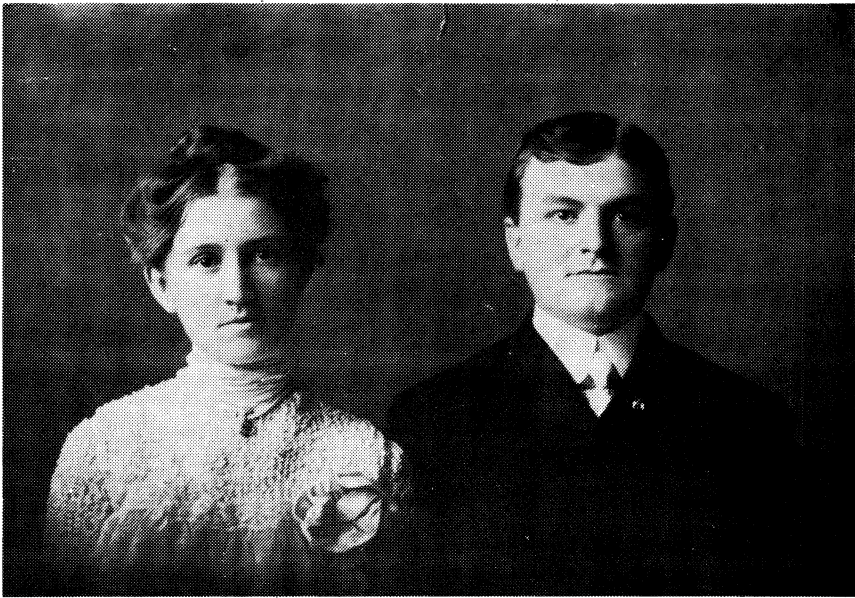
**Robert Gault**  
**Basil, Leapha, Mary, 1.119 Hannah (Fuller)**

1.11911 Thomas Arlene Lougheed	m Dec. 9, 1972 b Nov. 5, 1951
1.119111 Scott	b Aug. 3, 1978
1.119112 Rebecca	b Aug. 4, 1983
Grant Zavitz m May 10, 1958	b Nov. 28, 1935
1.11912 Norma	
1.119121 Calvin	b Nov. 24, 1962
1.119122 Carolyn	b Oct. 9, 1966
1.119121 Calvin Paula McLeod	m June 12, 1982 b Aug. 19, 1963
1.1191211 Gregory	b Dec. 5, 1982
1.111625 James William Fuller m Oct. 27, 1984	b Feb. 10, 1961
1.119122 Carolyn	
Ron Nash m.1.	b Aug. 23, 1936 D 1977
1.11913 Beverly	
1.119131 Laura Jean	b Feb. 25, 1961
1.119132 Ronald	b June 13, 1964
1.119133 Shane	b Feb. 14, 1971
Harold Dowdry m.2.	b June 27, 1932
1.11913 Beverly	
Charles Borland m	b June 26, 1958
1.119131 Laura Jean	
1.1191311 Tyler	b Mar. 14, 1978
1.1191312 Corey	b Sept. 23, 1983
Lloyd Knight 1.1192 Leaphea	m
1.11921 Clair	
1.11922 Ralph	
1.11923 Bruce	
1.11924 Muriel	
1.11921 Clair Lillian	m
*1.119211 Lynn	b 1949 ? d 1977 ?
1.119212 Harold	b 1950 ?
1.119213 Donna	b 1953 ?
* a Nurse - death by murder in California	
1.11922 Ralph Catherine Campbell	m
1.119221 Donald	b 1963 ?
1.119222 a girl	
1.11923 Bruce Jean Mordeau	m
1.119231 Nadine	b 1965 ?
1.119232 a boy	b 1970 ?

Gordon Smith	m
1.11924 Muriel	
1.119241 a girl	b 1968 ?
1.119242 a boy	b 1970 ?
Fred Wilkinson	b 1893 d 1977
m	
1.1193 Mary	
1.11931 Frances	b 1929
1.11932 Beatrice	b 1931
1.11933 Margaret	b 1934
1.11934 Fred	b 1942
Stewart O'Dell	b 1924
m	
1.11931 Frances	
1.119311 Jim	b 1956
1.119312 Patricia	b 1962
1.119313 Margaret	b 1964
Gus Albano	b 1924
m	
1.11932 Beatrice	
1.119321 Robert	b 1958
1.119322 Carolyn	b 1961
Edgar Srigley	b 1929
m	
1.11933 Margaret	
1.119331 Wendy	b 1965
1.119332 Stacy	b 1968
1.11934 Fred	m
Betty Ann Garrant	b 1942
1.119341 Denise	b 1966
1.119342 Jason	b 1970
Harold Webb	b 1912
m	
1.1194 Beatrice	
1.11941 Kathleen	b 1940
1.11942 Ellwood	b 1943
1.11943 Eleanor	b 1950
1.11942 Ellwood	m
Marie McCarrol	
1.119421 Janet	b 1967
1.119422 Lori	b 1970
David Marsh	m
1.11943 Eleanor	
1.119431 Ben	b 1980
1.119432 Raechel	b 1981
1.1195 Robert	m
Jean Bennet	b 1918
1.11951 Murray	b 1946
1.11952 Margaret	b 1950
1.11953 William	b 1952

1.11951 Murray Patricia Warwick	m b 1944
1.119511 Kevin	b 1974
1.119512 Darren	b 1976
1.12 John Fuller Fannie Clark	m.1. June 5, 1855 b 1836; d May 28, 1874
1.121 William Samuel	b Mar. 2, 1856; d Jan. 23, 1931
1.122 Matilda	b Dec. 11, 1858; d Dec. 16, 1907
1.123 Sarah Jane	b Oct. 18, 1860; d Oct. 8, 1888
1.124 John Thomas	b July 12, 1865; d July 2, 1941
m.2. July 14, 1874 Marg Henderson (nee Shillington)	d Jan. 1890
1.125 Newman Hall	b 1875; d May 17, 1942
1.126 Wilberforce John Clark	b Jan. 2, 1879; d Mar. 14, 1969
1.127 Athelstan G.E.	b 1881; d May 5, 1954
1.121 William S. Fuller Elizabeth	m b 1856
1.12111 Roydon John	b 1882
1.12112 Oswald	b 1884
1.12113 Minny	b 1885
1.12114 Gertrude	b 1887
1.12115 Florence	b 1890
? Wilson	m
1.123 Sarah Fuller	
1.124 John T. Fuller Eunice Ann Eckrett	m b Sept. 16, 1877; d Feb. 10, 1972
1.1241 Harold E.	b June 28, 1900; d Nov. 3, 1970
1.1242 Amy Lilian	b Feb. 10, 1902; d Mar. 25, 1951
1.1243 Vera	d Jan. 26, 1983
1.1241 Harold (Q.C.) Margaret McMan	m d 1973
1.12411 Steven Kerr	
Alfred H. Young (Q.C.) m	b Nov. 7, 1896; d Aug. 12, 1960
1.1242 Lilian	
1.12421 Mary Jane	b Feb. 18, 1929
1.12422 Donald John	b Mar. 2,, 1931
Lewis Rodgers m	d fall of 1985
1.12421 Jane	
1.124211 Mary Kim	b April 23, 1952
1.124212 David Earl	b Mar. 9, 1954
1.124213 Jennifer Lilian	b Oct. 17, 1956
1.124214 Andrew Lawrence	b Nov. 12, 1958
Stephen Young 1.124211 Kim	m.1. D
Malcom Boswell 1.124211 Kim	m.2.
1.1242111 Michael John Boswell	b Jan. 8, 1979
Ian Alfred Gordon Cameron 1.124213 Jennifer	m Oct. 23, 1981

1.12422 Donald	m Nov. 28, 1959
Shirley Anne Matthews	b Aug. 16, 1936
1.124221 Christopher John	b Mar. 3, 1962
1.124222 Leslie-Anne	b May 14, 1963
1.124223 Jeffrey Douglas	b July 4, 1967
1.124224 Michael Stuart	b Aug. 6, 1976
1.124221 Christopher	m Sept. 8, 1984
Karen Margaret Ludbrook	b May 4, 1962
1.1242211 Andrew John	b Oct. 9, 1985
Graham Gow	m
1.124222 Leslie-Anne	
1.1242221 Tyler James	b June 7, 1986
1.125 Newman Fuller	m
Ellen E. Ainley	
1.1251 Margaret	



Ellen and 1.125 Newman Fuller

1.126 Wilber Fuller	m Jan. 10, 1911
Henrietta Gertrude Spinharney	b June 18, 1879; d Mar. 12, 1948
1.1261 Margaret Maxine	b April 8, 1912
1.1262 Bertha Gertrude	b Oct. 8, 1913
1.1263 Stephen John	b July 1, 1915
1.1264 Mary Edith	b Mar. 4, 1917
1.1265 Wilber James	b Jan. 13, 1923
Daniel Holt Morton	m April 6, 1942
1.1261 Margaret	
1.12611 Daniel Holt	b May 24, 1944
1.12612 Margaret Maxine	b June 18, 1946
1.12613 Stephen James	b June 18, 1948
1.12614 Wilber John	b Feb. 20, 1951
1.12615 Patricia Ann	b July 9, 1952
Otis Dean Sparks	m Aug. 12, 1967
1.12612 Margaret	
Victor Henry Kosche	m Aug. 12, 1939
1.1262 Bertha Gertrude	
1.12621 Kathleen Ann	b Aug. 28, 1942
1.1263 Stephen John	m Dec. 29, 1941
Florence Audrey Putham	
1.12631 Geraldine Elaine	b Sept. 29, 1942
1.12632 Jacqueline Ann	b Feb. 12, 1944
1.12633 Jeanette Marie	b Dec. 11, 1948
1.12634 John Stephen	b April 2, 1951
1.12635 James Lawrence	b Aug. 16, 1955
David Hassler	m Sept. 29, 1942
1.12631 Geraldine Elaine	
1.126311 Deanne	
1.126312 Brian	
1.126313 Laura Anne	
Elliott Voegele	m Oct. 6, 1940
1.1264 Mary Edith	
1.12641 Ruth Margaret	b May 29, 1941
1.12642 Richard Elliot	b Sept. 2, 1942; d Nov. 30, 1942
1.12643 Judith Marie	b Dec. 14, 1943
1.12644 James Elliott	b May 14, 1950
Alan Graves	m
1.12641 Ruth Margaret	
1.126411 Richard Elliott	b May 17, 1964
1.126412 David	b Feb. 16, 1967
1.126113 Christopher	b July 13
1.126114 Jill	b Mar. 6
1.1265 Wilber James Fuller	m.1. 1950
Loranne Hartman	d circa 1952
1.12651 Susan Rae	b Feb. 12, 1950
1.12652 Judith Lynn	b Sept. 24, 1951

m.2. Aug. 16, 1952	
Leila Hartman	
1.12653 Deborah Ann	b Feb. 3, 1954
1.12654 Michael James	b July 28, 1955; d Oct. 17, 1955
1.12655 Patrick James (T)	b Jan. 7, 1957
1.12656 Patricia Lee (T)	b Jan. 7, 1957
1.12657 Michael John	b Mar. 11, 1965
1.127 Athelstan	m
Olive Mosteller	
1.1271 Harold	deceased
1.1272 John	deceased
Henry Sittlington	b 1826; d 1894
m	
1.13 Catherine Fuller	b 1836; d 1908
1.131 William	b 1856; d
1.132 Margaret	b 1859; d
1.133 George Wesley	b 1860; d 1872
1.134 Sarah M.	b 1863; d
1.135 Esther L	b 1865; d
1.136 Mary Elena	b 1868; d 1879
1.137 Samuel Norman	b 1871; d 1879
1.13 Jane Fuller	
1.15 William Fuller	
1.16 Thomas Fuller	m
Charlotte Jackson	
1.161 Mabel	
1.162 Myrtle	
1.163 Belle	
1.164 Samuel	
1.165 William	
John Kersey	b 1843; d 1931
m	
1.17 Ann Fuller	
1.171 Arthur Gilbert	b 1875; d 1931
1.172 Fred Samuel	b 1877
1.173 George Edward	b 1880
1.174 Robert John	b 1885; d 1953
1.171 Arthur	m
* Minnie Annett	b 1879; d 1976
* (sister of 1.115 Phil Fuller's wife)	
1.1711 Vera	b 1903
1.1712 Gilbert	b 1907
1.1713 Philip	b 1911
Sam Milward	m
1.1711 Vera	
1.173 George	m
Lillian Aylmer	
1.1731 Vesta Marie	b 1907
1.1732 LaVerne	b 1921

E. Gillet	b 1932
m	
1.1731 Vesta	
1.173 Robert	m
* 1.1112 Sadie Fuller	
1.11121 Esther May	b 1910
1.11122 Hugh	b 1912
1.11123 Elva	b 1917
* see previous extension	
Henry Hume	b 1838
m	
1.18 Matilda Fuller	
1.181 Herbert	
1.182 Samuel	b 1872
1.183 Esther	b 1875
1.184 Nellie	b 1877
1.185 Margaret	b 1879
1.186 Jessie	b 1881
George Wynne	m
1.1A Esther Fuller	
1.1B Samuel Fuller	m
Jane Henderson	
1.1B1 Ethel	m. Charles Quinn
1.1B2 Edna	m. Paul Leithoff
1.1B3 Harry	m. Hilda Johson
1.1B4 Maurine	m. George Hurdlebrink
Robert Tanner	m
1.1C Fannie Fuller	
1.1C1 Hugh	
1.1C2 Arthur	



1.3 George Fuller m Feb. 28, 1845 Elizabeth Lucas	b 1819; d 1886 b Oct. 9, 1827; d Mar. 20, 1917
1.31 Ann	b 1846; d 1926
1.32 William	b 1845; d 1907
1.33 Jane	b 1849; d 1850
1.34 John L.	b 1851; d 1939
1.35 George Wesley	b 1853; d 1853
1.36 Catherine	b 1855; d 1921
1.37 George	b 1857; d 1871
1.38 Mary Jane	b 1859; d 1952
1.39 Elizabeth	b 1861; d 1945
1.3A Thomas	b 1863; d 1945
1.3B J. Wesley	b 1865; d 1866
1.3C Maria	b 1868
1.3D Wesley S.	b 1870; d 1961
 Wm Kersey m April 1871 1.31 Ann	 b 1836; d 1923
1.311 Jonathan	b 1871
1.312 Isaac	b 1873; d 1903
1.313 Walter	b 1874
1.314 Albert	b 1876
1.315 Norman	b 1878; d 1905
1.316 Ernest	b 1879
1.317 Bertha	b 1883
1.318 George	b 1884
1.319 Elmer	b 1886
1.31A Wm Wesley	b 1892; d 1893
 1.311 Jonathan Theresa Healey-Stonehouse	 m
 1.313 Walter Evelyn Woollman m.2. Edna Hume-Cooper	 m.1.
 1.314 Albert Susie Messner	 m
 1.315 Norman Mamie Loree	 m
 1.316 Ernest Theresa Amelia Nesbit Sinclair	 m
 Henry Smith 1.317 Bertha	 m
 1.318 George Jimmie Lee Wheeler	 m
 1.319 Elmer Elizabeth Swartz	 m

1.32 William Fuller	m Oct. 20, 1874
Mary Levalley	b 1855; d 1925
1.321 Geo. Albert	
1.322 Eda Jane	
1.323 Elizabeth	d in infancy
1.321 Albert	m
Adella Dowding	
1.3211 Wm Geo. Clarence	
H.J. Richardon	m
1.322 Eda	
1.34 John Fuller	m Nov. 6, 1876
Eliza Smith	b 1853; d 1928
1.341 Elva	b 1879; d 1961
1.342 Lena	b 1883; d 1976
1.343 Maude	b 1887; d 1976
1.344 Charlotte	b 1891; d 1892
1.345 Margaret	b 1895; d 1978
John Laurence Brown	b 1881; d 1964
m	
1.342 Lena	
1.3421 Mildred	b 1911
1.3422 Fred	b 1915
1.3423 Howard	b 1920
1.3424 Eleanor	b 1924; d 1926
Gordon Tollington	b 1906
m	
1.3421 Mildred	
1.3422 Fred Brown	m
Harriet Schmidt	b 1914; d 1985
1.34221 Mason S.	b 1935; d 1984
1.34222 F. Martin	b 1944
1.34223 J. McKay	b 1940
1.34221 Mason	m
Betty J. Hodgins	b 1936
1.342211 John F.	b 1962
1.342212 Timothy A.	b 1967
1.342213 David W.	b 1970
1.34222 Martin	m
a widow with children	
1.34223 Mac	m
a widow with children	
Stanley C. Janney	b 1895; d 1979
m	
1.345 Margaret L.	

James Hme m Oct. 30, 1877 1.36 Catherine Fuller	b 1850; d 1899
1.361 Edna	m.1. Mr. Cooper m.2. 1.313 Walter Kersey
1.362 Bertha	
Wm Sittington 1.38 Mary Jane Fuller	m Oct. 4, 1882
1.381 Chester	
1.382 Caroline (Carrie)	b 1887; d 1911
Charles Barnes m Dec. 29, 1896 1.39 Elizabeth Fuller	b May 3, 1848
1.391 Lois	
1.392 Bessie	
1.3A Thomas Fuller Nellie Hagle	m Oct. 24, 1894 b 1870; d 1937
1.3A1 Earl	b 1898; d 1950
1.3A2 Clare	b 1899; d 1962
1.3A3 Lea	
1.3A4 Winnifred	b 1904; d 1931
1.3A2 Clare	m ?
1.3A21 Franklin	
1.3A22 Ralph	
Edwin Young 1.3A3 Lea	m
Frank Lamb 1.3C Maria (Millie?) Fuller	m Nov. 6, 1899
1.3D Wesley S. Fuller Margaret Holmes	m b 1870; d 1958
1.3D1 George	b 1900; d 1968
1.3D2 Joyce	b 1905
1.3D1 George Marguerite Pringle	m
1.3D21 Roger	
1.3D22 John	
1.3D23 Mrs. L. McClure	
Edward John Roberts m 1.3D2 Joyce	b 1902; d 1969

# Notes

# Notes

# Notes

Corrections to Family Tree  
of Geo. Fuller and Ann Thompson  
1781-1868

- p5-1 37 Church of God was the Brethern  
Assemblies
- p9-1 7 George and Sarah m 1854
- p19-1 35 delete and insert P.M. of Nov.  
8, 1973 a hunter and his dog came  
upon (the body of Ruth Anne Postif)
- p25-1 8 insert 1.113242 Alice L. m May 3,  
1964 Paul Lingard  
1.1132421 Brenton D. b Feb. 8,  
1965
- p40-1 6 1.11623 Richard b 1928
- p45-1 10 insert Betty m.1. 1952 1.11653  
Robert (D)
- p45-1 15 Edward England m June 1, 1953
- p46-1 delete David in photo for Lawrence
- p47-1 24 add Crick after Beth, Allen, Lorenda
- p48-1 12 to 27 from 1.116A1 Audrey to 1.116A32  
Robert dates are

b June 23, 1939

b Aug. 10, 1942

b Sept 26, 1944

b Aug, 10, 1951

m Aug. 31, 1957

b Oct. 3, 1958

b Nov. 7, 1959

b Oct. 21, 1963

m

m 1959

b 1959

b 1962

b 1965

m Nov. 17, 1962

b Nov. 25, 1963

b Mar. 15, 1965

p50-1 46 add 1.117414 Steven b July 5  
1964  
p51-1 47 Peter Morse  
1 51 Carol Lynn  
p53-1 30 1.118 George Fuller m June 6, 1898  
p64-1 22 1.3422 Fred d Jan. 14, 1987  
p65- 4 add 1.3611 Basil and 1.3612 Elgin  
p65-1 19 1.3A3 is Lela  
p25-1 9 add 1.113243 Donald (son of Ellwood)  
m Aug. 14, 1976  
Gail Stewart  
1.1132431 Brian b Sept. 12, 1979  
1.1132432 James b Jan. 23, 1982