

The Syhre Story – Pauline Olene Tolleivsdatter Syhre

Pauline Olene Syhre (Lena) was born January 8, 1882 in Syhre, Karmoy, Norway.

Parents: Tolleiv (Tollef) Johan Helgesen Syhre, born December 6, 1853 in the town of Syhre, Skudesnes, Rogaland, Island of Karmoy, Norway.

Lovise (Louise) Liknes Paulson, born May 26, 1857 in Nedre Liknes, Akra, Rogeland, Island of Karmoy, Norway.

They were married March 14, 1879 in Falnes Kirke, Skudesnes, Norway.

Grandparents: Helge & Kari Syhre

Paul & Olena Liknes



Note: Photos taken
in Croton, S.D.

Pauline Oline Syhre's Parents

Lovise Paulsdtr (Pauline Olene's Mother) was the daughter of Paul Larsen and Olene Kristoffersdtr.

Tolleiv (Tollef) Johan Helgesen (Pauline Olene's Father) was the son of Helge Johannesen and Kari Tolleivsdtr.

Tollef Helgesen Syhre was a sailor. It is known that he crossed the Atlantic from New York to the West Indies eleven times. This would have been prior to 1885 when he immigrated with his family to America.

It is thought that he was a crewman on the Barque "Sagathun". It is not known for sure what the ship carried but research indicates that North America sent such items as flour, corn and timber to the West Indies and returned with sugar and rum (which was sold at greatly inflated prices).

THE BARQUE "SAGATHUN"

"Sagathun" was built in 1870. It was 183 *komm.l.* after Porsgrunns *mlb.* of March 4, 1870. In 1879 it was re-measured into tonnes and was then according to *Slch. mlbr* of April 10 1870 336.4 tonnes.

The shipowner was Fr. Lundin, L. Riisdahl, D.Tørresen, E. Olsen, D. Jacobsen, S. Hages enke, Hans Olsen, Johannes Olsen and Jacob Haga. Skippers were Tørres Gjessen, E.O. Fredriksen, J.M.Olsen and T. Sivertsen. The barque serviced America, the Mediterranean and the Black Sea.

On one of these sailings "Sagathun" was tied up for 6 weeks in Vlissingen harbor due to a storm. Vlissingen is an island on the Belgian coast near Antwerp. During one of the days of the storm 14 ships drifted ashore and wrecked. "Sagathun" remained afloat, but both anchor stocks broke during the storm. They got two anchor stock replacements when the weather changed for the better. These are now anchor stakes at Steiminsholmen Reef. The Barque "Sagathun" was sold to Fredrikstad as of January 30, 1895.

There are two documents that indicate travel by Tollef Syhre.

On May 27, 1883, Tollef set sail on the steamship "Rhaetia" from Hamburg, Germany destined for New York. His accommodation was listed as "Zwischendeck" meaning "between the decks". His occupation was listed as "Landmann" translated as husbandry or handyman. The second document indicated he landed in New York on June 11, 1883.

The Rhaetia was a Transatlantic Passenger Ship built in Hamburg, Germany in 1882. It was considered a "feeder ship" from Norway to New York. The ship accommodated 96 First Class passengers, 1100 Third Class passengers and had a crew of 90. Its maiden voyage was made April 4, 1883.

The reason for this trip is unknown. However, it was a "Passenger" ship not a "Cargo" ship as was usual for the trips to the West Indies. At the time of this voyage, Tollef would have been married with two young children (the younger being Pauline Oline (Lena) Syhre). Was he scouting out the new frontier and planning to immigrate? It was only two years later that they did come to America as a family.

Ancestry.ca indicates he was travelling with a Joh.s Syre (unclear document), age 31. Was this a relative?

Hamburger Passagierlisten, 1850-1934 - Ancestry.ca

Name:	Tollef Syre
Departure Date:	27 Mai 1883 (27 May 1883)
Estimated Birth Year:	abt 1854
Age Year:	29
Gender:	männlich (Male)
Family:	Household members
Residence:	Stavanger, Norwegen
Occupation:	Landmann
Ship Name:	Rhaetia
Captain:	Vogelgesang
Shipping Line:	Hamburg-Amerikanische Packetfahrt-Actien-Gesellschaft
Ship Type:	Dampfschiff
Accommodation:	Zwischendeck
Ship Flag:	Deutschland
Port of departure:	Hamburg
Port of arrival:	New York
Volume:	373-7 I, VIII A 1 Band 048 C
Page:	858
Microfilm Roll Number:	K_1729

Source Citation: Staatsarchiv Hamburg. 373-7 I, VIII A 1 Band 048 C, Seite 858 (Mikrofilm Nr. K_1729)

Source Information: Staatsarchiv Hamburg. Hamburg Passenger Lists, 1850-1934 [database on-line]. Provo, UT, USA: Ancestry.com Operations Inc, 2008.



Original data: Staatsarchiv Hamburg, Bestand: 373-7 I, VIII (Auswanderungsamt I). Mikrofilmrollen K 1701 - K 2008, S 17363 - S 17383, 13116 - 13183.

Description:

This database contains passenger lists of ships that departed from the port of Hamburg, Germany from 1850-1934 (with a gap from 1915-1919 due to World War I). The database includes images of the passenger lists digitized from microfilm in partnership with the Hamburg State Archive, available here for the first time online. It also includes a complete index for the years 1877-1914 (up to the start of World War I). [Learn more...](#)

New York Passenger Lists, 1820-1957 - Ancestry.ca

Name:	Tollef Syre
Arrival Date:	11 Jun 1883
Birth Year:	abt 1854
Age:	29
Gender:	Male
Place of Origin:	Harmege
Port of departure:	Hamburg, Germany and Le Havre, France
Destination:	United States of America
Port of arrival:	New York
Port Arrival State:	New York
Port Arrival Country:	United States
Ship Name:	Rhaetia
Search Ship Database:	Search the Rhaetia in the 'Passenger Ships and Images' database

Source Citation: Year: 1883; Arrival: New York, United States; Microfilm Serial: M237; Microfilm Roll: M237_466; Line: 5; List Number: 714; .

Source Information:

Ancestry.com. New York Passenger Lists, 1820-1957 [database on-line]. Provo, UT, USA: Ancestry.com Operations, Inc., 2010.



Original data:

- Passenger Lists of Vessels Arriving at New York, New York, 1820-1897; (National Archives Microfilm Publication M237, 675 rolls); Records of the U.S. Customs Service, Record Group 36; National Archives, Washington, D.C.
- Passenger and Crew Lists of Vessels Arriving at New York, New York, 1897-1957; (National Archives Microfilm Publication T715, 8892 rolls); Records of the Immigration and Naturalization Service; National Archives, Washington, D.C.

Description:

This database is an index to the passenger lists of ships arriving from foreign ports at the port of New York from 1820-1957. In addition, the names found in the index are linked to actual images of the passenger lists. Information contained in the index includes given name, surname, age, gender, arrival date, port of arrival, port of departure and ship name. [Learn more...](#)

When Pauline Olene (**Lena**) was three years old, her family left Norway for America. Possibly, Tollef had decided a life on the sea as a sailor was too dangerous and meant being away from his family for too long periods of time.

The New York Passenger Lists (Ancestry.ca) indicates the family was registered under the name "Helgesen". Tollef's father's name was Helge Syhre. The route travelled was from Norway to Glasgow, Scotland, then to Larne, Ireland, and across the Atlantic Ocean, arriving at New York on June 1, 1885. (This was the same year as the Riel Rebellion was being waged in Canada).

They sailed on the steamship, "State of Alabama", a ship built in 1873. This ship could accommodate 30 passengers in 1st Class, 50 Intermediate passengers and 200 in 3rd Class. The Passenger List indicated there were 332 "aliens" on the ship with immigrants from Germany, Hungary, Austria, Norway, Sweden, Denmark and Russia. The largest group of immigrants came from Russia.

The Ship's Passenger List registered Tollef (age 31), Lovise (age 27) Lisa (4 ½) and Pauline (3). The Helgesen family travelled in steerage, (3rdClass), as did most immigrants. Their destination was "Dacota Middle". The ocean voyage likely took several weeks, not an easy time for adults or children. It must have been very difficult for Lovise as she would have been pregnant with Hagbert (the first child named Hagbert) at the time of the journey. He was born December 16, 1885 after their arrival in America and died in 1889. A later baby was also named Hagbert.

Once the ship had crossed the ocean, their first stop would have been Ellis Island, an island in New York Harbor. Initially Ellis Island was part of the U.S. harbor defense system (1794 – 1890) and was called Castle Garden Immigration Depot. It was renovated and reopened as Ellis Island on January 1, 1892. All immigrants to America had to pass by this way. First and Second Class passengers did not have to go through inspection at Ellis Island as they were quickly inspected on board the ship. The thinking was "If they could afford the price of these tickets, they were probably not 'undesirable' for medical or legal reasons". Third Class passengers were transported from the ship by ferry to the Island to be thoroughly inspected. Because they travelled in crowded and unsanitary conditions, at the lowest level of the ship, illness was common. Many spent the duration of the trip in their bunks, suffering from seasickness. Once on the Island, they were inspected in a Registry Room by Medical Doctors. Common reasons for rejection were contagious diseases or visible health problems which might make them a public charge. If papers were in order and there were no visible health issues, they were allowed to continue on their journey. This area was sometimes known as the "Island of Tears" as some were not accepted and were refused entry to America. There was also a wooden column that was known as the "Kissing Post" where new arrivals, who were accepted, were greeted with hugs and kisses.

For Tollef and his family, the next part of the journey to "Dacota Middle" was probably by train. There, they would begin their "new life" in America as a "farming family". They put down roots in Pierpont, Day County, South Dakota. They likely chose this area because others from Norway had already come to or were soon coming to this area. Church records for Pierpont reveal membership by families with surnames such as Aadland, Knutson, Peterson etc. It was obviously a Scandinavian community. Possibly the main reason they came to South Dakota is a clue from the 1910 United States Census. This Census

indicates a Jacob J. Syhre had settled in Lynn, Day County, South Dakota in 1873 – twelve years prior to Tollef’s arrival. Likely, they were relatives.

This is the area that Pauline Olene (Lena) spent her childhood years. It would also be where she received her education. Although the extent of her education is not known, a later Census document indicates that at age 18 she was living away from home and was listed as a student/servant with the Lemen family. It was evident in her adult years that she was well read as well as being a wise leader in her Church and Community. Apparently Lena liked “outdoor work” such as haying and working in the fields with her Dad. In later years, as a young widow with a family, this experience stood her well as she was able to continue farming – doing much of the outside work herself! It has also been told that even in later years she loved to jump on a horse, without saddle or bridle and go for a horseback ride

New York Passenger Lists, 1820-1957 record for T Helgesen

111	W. Helge Helgesen	46	M.	Farmer	Norway	Michigan	Free	Swamp	1	Pro Se form
112	Augusta Helgesen	38	F	wife		at York				
113	John Helge	8	M	son						
114	Paul Helge	16	M							
115	John Helge	20	M	Boiler						
116	John Helge	23	M	Boiler						
117	John Helge	26	M	Boiler						
118	J. Helge	28	M	Boiler						
119	John Helgesen	41	M	Boiler						
120	Augusta Helgesen	51	F	wife						
121	John Helgesen	23	M	Boiler						
122	John Helgesen	26	M	Boiler						
123	John Helgesen	28	M	Boiler						
124	John Helgesen	26	M	Boiler						
125	John Helgesen	26	M	Boiler						
126	John Helgesen	26	M	Boiler						
127	John Helgesen	26	M	Boiler						
128	John Helgesen	26	M	Boiler						
129	John Helgesen	26	M	Boiler						
130	John Helgesen	26	M	Boiler						
131	John Helgesen	26	M	Boiler						
132	John Helgesen	26	M	Boiler						
133	John Helgesen	26	M	Boiler						
134	John Helgesen	26	M	Boiler						
135	John Helgesen	26	M	Boiler						
136	John Helgesen	26	M	Boiler						
137	John Helgesen	26	M	Boiler						
138	John Helgesen	26	M	Boiler						
139	John Helgesen	26	M	Boiler						
140	John Helgesen	26	M	Boiler						
141	John Helgesen	26	M	Boiler						
142	John Helgesen	26	M	Boiler						
143	John Helgesen	26	M	Boiler						
144	John Helgesen	26	M	Boiler						
145	John Helgesen	26	M	Boiler						
146	John Helgesen	26	M	Boiler						
147	John Helgesen	26	M	Boiler						
148	John Helgesen	26	M	Boiler						
149	John Helgesen	26	M	Boiler						
150	John Helgesen	26	M	Boiler						
151	John Helgesen	26	M	Boiler						
152	John Helgesen	26	M	Boiler						
153	John Helgesen	26	M	Boiler						
154	John Helgesen	26	M	Boiler						
155	John Helgesen	26	M	Boiler						
156	John Helgesen	26	M	Boiler						
157	John Helgesen	26	M	Boiler						
158	John Helgesen	26	M	Boiler						
159	John Helgesen	26	M	Boiler						
160	John Helgesen	26	M	Boiler						
161	John Helgesen	26	M	Boiler						
162	John Helgesen	26	M	Boiler						
163	John Helgesen	26	M	Boiler						
164	John Helgesen	26	M	Boiler						
165	John Helgesen	26	M	Boiler						
166	John Helgesen	26	M	Boiler						
167	John Helgesen	26	M	Boiler						
168	John Helgesen	26	M	Boiler						
169	John Helgesen	26	M	Boiler						
170	John Helgesen	26	M	Boiler						
171	John Helgesen	26	M	Boiler						
172	John Helgesen	26	M	Boiler						
173	John Helgesen	26	M	Boiler						
174	John Helgesen	26	M	Boiler						
175	John Helgesen	26	M	Boiler						
176	John Helgesen	26	M	Boiler						
177	John Helgesen	26	M	Boiler						
178	John Helgesen	26	M	Boiler						
179	John Helgesen	26	M	Boiler						
180	John Helgesen	26	M	Boiler						
181	John Helgesen	26	M	Boiler						
182	John Helgesen	26	M	Boiler						
183	John Helgesen	26	M	Boiler						
184	John Helgesen	26	M	Boiler						
185	John Helgesen	26	M	Boiler						
186	John Helgesen	26	M	Boiler						
187	John Helgesen	26	M	Boiler						
188	John Helgesen	26	M	Boiler						
189	John Helgesen	26	M	Boiler						
190	John Helgesen	26	M	Boiler						
191	John Helgesen	26	M	Boiler						
192	John Helgesen	26	M	Boiler						
193	John Helgesen	26	M	Boiler						
194	John Helgesen	26	M	Boiler						
195	John Helgesen	26	M	Boiler						
196	John Helgesen	26	M	Boiler						
197	John Helgesen	26	M	Boiler						
198	John Helgesen	26	M	Boiler						
199	John Helgesen	26	M	Boiler						
200	John Helgesen	26	M	Boiler						
201	John Helgesen	26	M	Boiler						
202	John Helgesen	26	M	Boiler						
203	John Helgesen	26	M	Boiler						
204	John Helgesen	26	M	Boiler						
205	John Helgesen	26	M	Boiler						
206	John Helgesen	26	M	Boiler						
207	John Helgesen	26	M	Boiler						
208	John Helgesen	26	M	Boiler						
209	John Helgesen	26	M	Boiler						
210	John Helgesen	26	M	Boiler						
211	John Helgesen	26	M	Boiler						
212	John Helgesen	26	M	Boiler						
213	John Helgesen	26	M	Boiler						
214	John Helgesen	26	M	Boiler						
215	John Helgesen	26	M	Boiler						
216	John Helgesen	26	M	Boiler						
217	John Helgesen	26	M	Boiler						
218	John Helgesen	26	M	Boiler						
219	John Helgesen	26	M	Boiler						
220	John Helgesen	26	M	Boiler						

Record Index

Source Information

Name: T Helgesen

Arrival Date: 1 Jun 1885

Birth Year: abt 1854

Record URL: <http://search.ancestry.com/cgi-bin/sse.dll?h=9315713&db=nypl&indiv=try>

Source Citation: Year: 1885; Arrival: New York, United States;

New York Passenger Lists, 1820-1957

Name: **T Helgesen**
 Arrival Date: **1 Jun 1885**
 Birth Year: **abt 1854**
 Age: **31**
 Gender: **Male**
 Ethnicity/Race-
 /Nationality: **Norwegian**
 Place of Origin: **Norway**
 Port of
 departure: **Glasgow, Scotland and Larne, Ireland**
 Destination: **Dacota Middle**
 Port of arrival: **New York**
 Port Arrival
 State: **New York**
 Port Arrival
 Country: **United States**
 Ship Name: **State of Alabama**
 Search Ship
 Database: [Search the State of Alabama in the 'Passenger
 Ships and Images' database](#)

Source Citation: Year: 1885; Arrival: *New York, United States*;
 Microfilm Serial: M237; Microfilm Roll: M237_487; Line: 56; List Number: 647; .

Source Information:

Ancestry.com, *New York Passenger Lists, 1820-1957* [database
 on-line]. Provo, UT, USA: Ancestry.com Operations, Inc., 2010.



Original data:

- Passenger Lists of Vessels Arriving at New York, New York, 1820-1897; (National Archives Microfilm Publication M237, 675 rolls); Records of the U.S. Customs Service, Record Group 36; National Archives, Washington, D.C.
- Passenger and Crew Lists of Vessels Arriving at New York, New York, 1897-1957; (National Archives Microfilm Publication T715, 8892 rolls); Records of the Immigration and Naturalization Service; National Archives, Washington, D.C.

Description:

This database is an index to the passenger lists of ships arriving from foreign ports at the port of New York from 1820-1957. In addition, the names found in the index are linked to actual images of the passenger lists. Information contained in the index includes given name, surname, age, gender, arrival date, port of arrival, port of departure and ship name. [Learn more...](#)

New York Passenger Lists, 1820-1957

Name: **Louise Helgesen**
 Arrival Date: **1 Jun 1885**
 Birth Year: **abt 1858**
 Age: **27**
 Gender: **Female**
 Ethnicity/Race-
 /Nationality: **Norwegian**
 Place of Origin: **Norway**
 Port of
 departure: **Glasgow, Scotland and Larne, Ireland**
 Destination: **Dacota Middle**
 Port of arrival: **New York**
 Port Arrival
 State: **New York**
 Port Arrival
 Country: **United States**
 Ship Name: **State of Alabama**
 Search Ship
 Database: [Search the State of Alabama in the 'Passenger
 Ships and Images' database](#)

Source Citation: Year: 1885; Arrival: *New York, United States*;
 Microfilm Serial: M237; Microfilm Roll: M237_487; Line: 57; List Number: 647; .

New York Passenger Lists, 1820-1957

Name: **Lise Helgesen (Lizzie)**
 Arrival Date: **1 Jun 1885**
 Birth Year: **abt 1880**
 Age: **4 6/12**
 Gender: **Female**
 Ethnicity/Race-
 /Nationality: **Norwegian**
 Place of Origin: **Norway**
 Port of
 departure: **Glasgow, Scotland and Larne, Ireland**
 Destination: **Dacota Middle**
 Port of arrival: **New York**
 Port Arrival
 State: **New York**
 Port Arrival
 Country: **United States**
 Ship Name: **State of Alabama**
 Search Ship
 Database: [Search the State of Alabama in the 'Passenger
 Ships and Images' database](#)

Source Citation: Year: 1885; Arrival: *New York, United States*;
 Microfilm Serial: M237; Microfilm Roll: M237_487; Line: 58; List Number: 647; .

New York Passenger Lists, 1820-1957

Name: **Pauline Helgesen (Lena)**
 Arrival Date: **1 Jun 1885**
 Birth Year: **abt 1882**
 Age: **3**
 Gender: **Female**
 Ethnicity/Race-
 /Nationality: **Norwegian**
 Place of Origin: **Norway**
 Port of
 departure: **Glasgow, Scotland and Larne, Ireland**
 Destination: **Dacota Middle**
 Port of arrival: **New York**
 Port Arrival
 State: **New York**
 Port Arrival
 Country: **United States**
 Ship Name: **State of Alabama**
 Search Ship
 Database: [Search the State of Alabama in the 'Passenger
 Ships and Images' database](#)

Source Citation: Year: 1885; Arrival: *New York, United States*;
 Microfilm Serial: M237; Microfilm Roll: M237_487; Line: 59; List Number: 647; .

The Syhre Family

Although the journey to America must have been exciting for this young family, it also must have been a very difficult time. This is certainly reflected in the births and untimely deaths of members of the family.

When the family arrived in Pierpont, South Dakota, there were four in the family – Tollef, age 31; Lovise, age 27; Lisa, age 4 ½ and Pauline, age 3. During the coming years, Lovise gave birth to nine more babies. Of these eleven births, only six reached adulthood. The toll of the move to America plus the pregnancies and deaths of five of these children were probably one of the causes of her early death at 44 years of age. Apparently both she and Tollef suffered from TB ~~as well~~.

Lisa (Lizzie) Jorgine born Feb. 5, 1880 in Norway, married Ludvig Aadland, came to Canada in 1905, homesteaded in the Loreburn area.

Pauline (Lena) Olene born Jan. 8, 1882 in Norway, married Olaus Akre, came to Canada in 1906, homesteaded in the Strongfield area.

Hagbert born Dec. 16, 1885 in Pierpont, just six months after their arrival in America, died Dec. 26, 1889 at 4 years of age.

Hannah Cornelia born Sept. 7, 1887, married Gustav Tastad, came to Canada in 1906, homesteaded in Hawarden/Glenside area, then Loreburn area.

Lovise born July 16, 1889, died the same day

Lawrence Hagbert born Aug. 4, 1890, came to Canada with older sister, Lizzie and Ludvig Aadland, was the first Confirmand at the newly established Skudesnes Lutheran Church, Loreburn and returned to the United States for the rest of his life.

Tilla Lovise born June 29, 1892, died June 27, 1893 at one year of age.

Lydia Therese born May 4, 1894, came to Canada with older sister, Lena and Olaus Akre; attended Pleasant Ridge School; confirmed at Skudesnes Lutheran Church, Loreburn; married Andrew Halvorsen; lived in Strongfield area then moved to Red Deer, Alberta.

Olof born Sept. 25, 1896, came to Canada with older sister Lena and Olaus Akre, attended Pleasant Ridge School, returned to the United States in 1911 for the remainder of his life.

Bennie Leonard born Dec. 9, 1898, died Jan. 6, 1899 at one month of age.

Julius born April 23, 1901, died Sept. 6, 1901 at 4 months of age.

Note: Lovise (the Mother) died Sept. 11, 1901, just five days after giving birth to Julius. She was 44 years of age. Tollef (the Father) died Feb. 17, 1902, five months after his wife. He was 48 years of age.

It seemed the first order of business for new settlers from Scandinavian countries was to establish a Church. Such was the case in Pierpont. A meeting to organize a Congregation was held July 8, 1885 with a charter membership of 24. The by-laws were adopted October 24, 1885 and the church itself was constructed in 1891. It is likely Tollef was involved in this new church. The name of the congregation was "Skudesnes Evangelical Lutheran Church", Day County, Pierpont, South Dakota.

Note: In 2012, the church was still open with an average attendance of 19.

Note: The name Helgesen as a surname has been dropped and the family is now known as "Syhre".

Four of the "Helgesen / Syhre" children were confirmed in this church in Pierpont.

Lisa (Lizzie) – June 1894

Pauline (Lena)– May 1896

Hannah – July 1902

Olof – June 1912

Note: Olof had come to Canada with his sister, Pauline (Lena) and her new husband Olaus Akre in 1906. However, he had obviously returned to South Dakota at this time (1912) and was confirmed there.

Hagbert – August 1, 1906.

Note: Hagbert was confirmed in Skudesnes Lutheran Church in Saskatchewan. He had come to Canada with his older sister, Lizzie and husband Ludvig Aadland. He was the first Confirmand in the newly established congregation in Saskatchewan. He later returned to the United States.

Lydia – October 31, 1909

Note: Lydia was confirmed in Skudesnes Lutheran Church in Saskatchewan. She also had come to Canada with her sister, Lena, and Olaus.

It is known that Lisa (Lizzie) and Pauline (Lena) were baptized in Norway. Although no records have been found to date, it can be assumed the rest of the family were baptized in Skudesnes, South Dakota.

Name: **Helgson Syhre**
[Cl?? Synre]

Home in 1900: Lynn, Day, South Dakota
[Raritan, Day, South Dakota]

Age: 46

Birth Date: Nov 1858

Birthplace: Norway

Race: White

Gender: Male

Immigration Year: 1885

Relationship to
head-of-house: Head

Father's
Birthplace: Norway

Mother's
Birthplace: Norway

Spouse's name: Louise Syhre

Marriage Year: 1879

Marital Status: Married

Years Married: 21

Occupation: [View on Image](#)

Neighbors: [View others on page](#)

Household Members:	Name	Age
	Helgson Syhre	46
	Louise Syhre	43
	Lizzie Syhre	20
	Hannah Syhre	12
	Hagbert Syhre	9
	Lydia T Syhre	6
	Olof Syhre	3

Source Citation: Year: 1900; Census Place: Lynn, Day, South Dakota; Roll: T623_1549; Page: 8B; Enumeration District: 124.

Source Information:



Ancestry.com. 1900 United States Federal Census [database on-line]. Provo, UT, USA: Ancestry.com Operations Inc. 2004.

Original data: United States of America, Bureau of the Census. *Twelfth Census of the United States, 1900*. Washington, D.C.: National Archives and Records Administration, 1900. T623, 1854 rolls.

Description:

This database is an index to individuals enumerated in the 1900 United States Federal Census, the Twelfth Census of the United States. Census takers recorded many details including each person's name, address, relationship to the head of household, color or race, sex, month and year of birth, age at last birthday, marital status, number of years married, the total number of children born of the mother, the number of those children living, birthplace, birthplace of father and mother, if the individual was foreign born, the year of immigration and the number of years in the United States, the citizenship status of foreign-born individuals over age twenty-one, occupation, and more. Additionally, the names of those listed on the population schedule are linked to actual images of the 1900 Federal Census. [Learn more...](#)

1900 United States Federal Census

Name: **Louise Syhre**
[Louise Synre]

Home in 1900: Lynn, Day, South Dakota
[Raritan, Day, South Dakota]

Age: 43

Birth Date: May 1857

Birthplace: Norway

Race: White

Gender: Female

Immigration Year: 1885

Relationship to
head-of-house: Wife

Father's
Birthplace: Norway

Mother's
Birthplace: Norway

Mother: number of
living children: 6

Mother: How
many children: 10

Spouse's name: Helgson Syhre

Marriage Year: 1879

Marital Status: Married

Years Married: 21

Occupation: [View on Image](#)

Neighbors: [View others on page](#)

Household Members:	Name	Age
	Helgson Syhre	46
	Louise Syhre	43
	Lizzie Syhre	20
	Hannah Syhre	12
	Hagbert Syhre	9
	Lydia T Syhre	6
	Olof Syhre	3

Source Citation: Year: 1900; Census Place: Lynn, Day, South Dakota; Roll: T623_1549; Page: 8B; Enumeration District: 124.

Source Information:



Ancestry.com. 1900 United States Federal Census [database on-line]. Provo, UT, USA: Ancestry.com Operations Inc. 2004.

Original data: United States of America, Bureau of the Census. *Twelfth Census of the United States, 1900*. Washington, D.C.: National Archives and Records Administration, 1900. T623, 1854 rolls.

Description:

This database is an index to individuals enumerated in the 1900 United States Federal Census, the Twelfth Census of the United States. Census takers recorded many details including each person's name, address, relationship to the head of household, color or race, sex, month and year of birth, age at last birthday, marital status, number of years married, the total number of children born of the mother, the number of those children living, birthplace, birthplace of

TWELFTH CENSUS OF THE UNITED STATES. B

SCHEDULE No. 1.—POPULATION.

State South Dakota Supervisor's District No. 116 Sheet No. 9
 County Day Enumeration District No. 116
 Township or other division of county Union Name of Institution _____
 Name of incorporated city, town, or village, within the above-named division _____ Ward of city _____
 Enumerated by me on the 15th day of June, 1900. Ernest A. Hall Enumerator.

LOCATION	NAME	RELATION	PERSONAL DESCRIPTION	NATIVITY			CITIZENSHIP	OCCUPATION, TRADE, OR PROFESSION	EDUCATION	SPEECH OF ENL.
				Place of birth of this person	Place of birth of father of this person	Place of birth of mother of this person				
1	Lemen Robert C	son	1882	South Dakota	Canada	Canada	1882			
2	Lemen Ruby	daughter	1882	South Dakota	Canada	Canada	1882			
3	Lemen William H	son	1882	South Dakota	Canada	Canada	1882			
4	Lemen Lena	daughter	1882	South Dakota	Canada	Canada	1882			
5	Lemen Helen	daughter	1882	South Dakota	Canada	Canada	1882			
6	Lemen George	son	1882	South Dakota	Canada	Canada	1882			
7	Lemen Lina	daughter	1882	South Dakota	Canada	Canada	1882			
8	Lemen Elizabeth	daughter	1882	South Dakota	Canada	Canada	1882			
9	Lemen Walter	son	1882	South Dakota	Canada	Canada	1882			
10	Lemen Edna	daughter	1882	South Dakota	Canada	Canada	1882			
11	Lemen William M	son	1882	South Dakota	Canada	Canada	1882			
12	Lemen George	son	1882	South Dakota	Canada	Canada	1882			
13	Lemen Elizabeth	daughter	1882	South Dakota	Canada	Canada	1882			
14	Lemen Lina	daughter	1882	South Dakota	Canada	Canada	1882			
15	Lemen George	son	1882	South Dakota	Canada	Canada	1882			
16	Lemen Elizabeth	daughter	1882	South Dakota	Canada	Canada	1882			
17	Lemen Lina	daughter	1882	South Dakota	Canada	Canada	1882			
18	Lemen George	son	1882	South Dakota	Canada	Canada	1882			
19	Lemen Elizabeth	daughter	1882	South Dakota	Canada	Canada	1882			
20	Lemen Lina	daughter	1882	South Dakota	Canada	Canada	1882			
21	Lemen George	son	1882	South Dakota	Canada	Canada	1882			
22	Lemen Elizabeth	daughter	1882	South Dakota	Canada	Canada	1882			
23	Lemen Lina	daughter	1882	South Dakota	Canada	Canada	1882			
24	Lemen George	son	1882	South Dakota	Canada	Canada	1882			
25	Lemen Elizabeth	daughter	1882	South Dakota	Canada	Canada	1882			

1900 United States Federal Census

Name: **Lina Syhre**

Home in 1900: Union, Day, South Dakota
[Bristol, Day, South Dakota]

Age: 18

Birth Date: Jan 1882

Birthplace: Norway

Race: White

Gender: Female

Immigration Year: 1885

Relationship to head-of-house: Servant

Father's Birthplace: Norway

Mother's Birthplace: Norway

Marital Status: Single

Occupation: [View on Image](#)

Neighbors: [View others on page](#)

Household Members:	Name	Age
	William H Lemen	38
	Laura Lemen	30
	Trine L Lemen	9
	Walter C Lemen	6
	Edna E Lemen	3
	William M Lemen	9/12
	Elisabeth Lemen	76
	Lina Syhre	18
	George Engebretson	25

Note: Before my Mother, Helen (Akre) Langager died, she gave me a plate that had belonged to her Mother, Lena. On the back of this plate, Helen had taped a note saying that her Mother, Lena, had received this plate as a gift from Mrs. Lemon. This "Mrs. Lemon" was a mystery until I saw the 1900 Census. It had obviously been a gift to her from the woman she lived with and worked for. Karen (Langager) Hopkins

Source Citation: Year: 1900; Census Place: Union, Day, South Dakota; Roll: T623_1548; Page: 9B; Enumeration District: 116.

Source Information: Ancestry.com. 1900 United States Federal Census [database on-line]. Provo, UT, USA: Ancestry.com Operations Inc, 2004.



A mystery is solved!

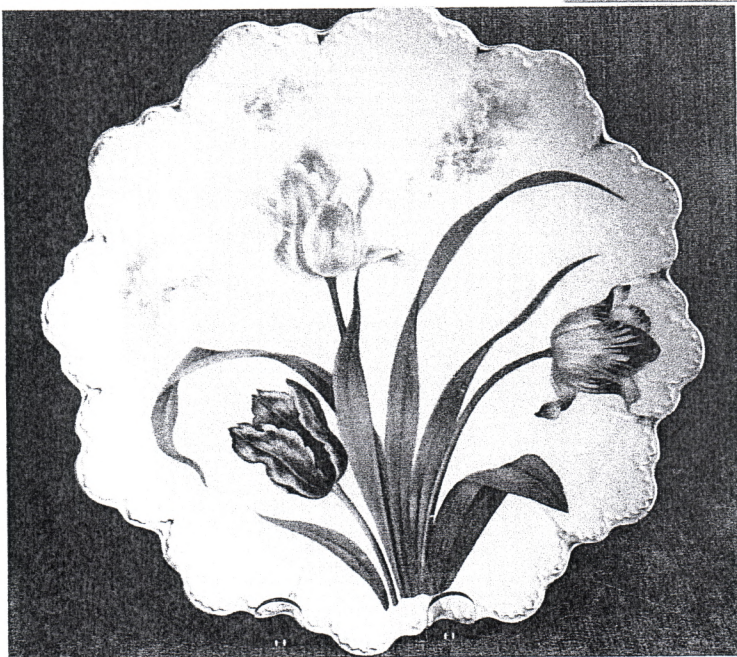
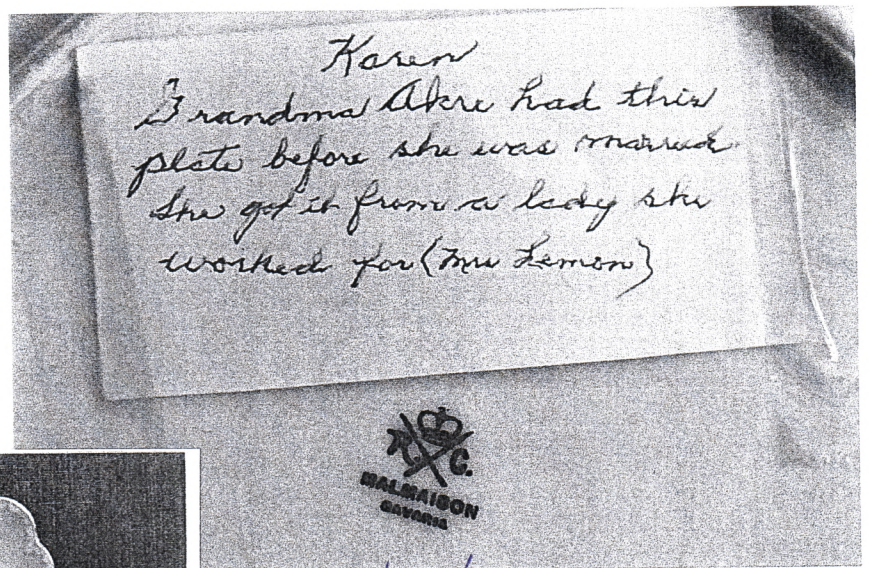
This china plate was in my Mom's (Helen) possession for as long as I can remember. Mom always said that it was given to her by her Mother (Lena) and that it was a very special plate. It was always in Mom's china cabinet – at the farm and also in her condo in Saskatoon. I don't recall her ever using it. She always said it was to be mine someday.

When Mom had to leave her condo and move into the Intermediate Care Home, I had the task of dividing her household effects among the family. When I took the plate out of her cabinet, I noticed that she had written a note and taped it to the back of the plate. Because her handwriting was still clear, I knew the note had been written some time before. I didn't know anything about "Mrs. Lemon" other than what was written on the note.

Sometime later as I was researching on-line, I came upon the United States Census for 1900. As stated in a previous document, it indicated that Lena was living with the **Lemon family** and was listed as "servant" and was "at school".

This was the "Mrs. Lemon" noted on the plate. We now know the plate was given to Lena about 1900. It may have been new at the time, but possibly it was a plate that had belonged to Mrs. Lemon for some time. At the time of writing this history, we know that the plate would be at least 112 years old.

It now has a special place in my China Cabinet. Karen (Langager) Hopkins – June 2012



Check antique?

Syhre Family Events 1900 – 1905

September 11, 1901 Lovise, the mother, died. This was only five days after the death of her eleventh baby, Julius. She was only 44 years old. It is known that she suffered from TB but the strain of eleven pregnancies must have taken their toll on her health. She was buried in Day County, South Dakota. It can be assumed the five children that died are also buried in the same area. Left behind were Tollef and the family of six: Lizzie – 22 years, Lena – 20 years, Hannah – 14 years, Hagbert – 11 years, Lydia – 6 years and Olof – 5 years.



Tolleiv (Tollef) Olof Hannah Lawrence Hagbert Lisa (Lizzie) Lydia, Lena

It is believed this photo was taken after Lovise's death. It is possible it was even at the time of the funeral, judging by the attire and somber appearance of the family. (Is it possibly Hannah is holding the family Bible?)

January 14, 1902 Lizzie (the eldest daughter) and Ludvig Aadland were married.

February 17, 1902 Tollef, the father, died. His death came only five months after the death of his wife. He was 48 years old. He too, had suffered from TB. He is buried in Day County.

The Syhre Family

Although the journey to America must have been exciting for this young family, it also must have been a very difficult time. This is certainly reflected in the births and untimely deaths of members of the family.

When the family arrived in Pierpont, South Dakota, there were four in the family – Tollef, age 31; Lovise, age 27; Lisa, age 4 ½ and Pauline, age 3. During the coming years, Lovise gave birth to nine more babies. Of these eleven births, only six reached adulthood. The toll of the move to America plus the pregnancies and deaths of five of these children were probably one of the causes of her early death at 44 years of age. Apparently both she and Tollef suffered from TB as well.

Lisa (Lizzie) Jorgine born Feb. 5, 1880 in Norway, married Ludvig Aadland, came to Canada in 1905, homesteaded in the Loreburn area.

Pauline (Lena) Olene born Jan. 8, 1882 in Norway, married Olaus Akre, came to Canada in 1906, homesteaded in the Strongfield area.

Hagbert born Dec. 16, 1885 in Pierpont, just six months after their arrival in America, died Dec. 26, 1889 at 4 years of age.

Hannah Cornelia born Sept. 7, 1887, married Gustav Tastad, came to Canada in 1906, homesteaded in Hawarden/Glenside area, then Loreburn area.

Lovise born July 16, 1889, died the same day

Lawrence Hagbert born Aug. 4, 1890, came to Canada with older sister, Lizzie and Ludvig Aadland, was the first Confirmand at the newly established Skudesnes Lutheran Church, Loreburn and returned to the United States for the rest of his life.

Tilla Lovise born June 29, 1892, died June 27, 1893 at one year of age.

Lydia Therese born May 4, 1894, came to Canada with older sister, Lena and Olaus Akre, attended Pleasant Ridge School, confirmed at Skudesnes Lutheran Church, Loreburn, married Andrew Halvorsen, lived in Strongfield area then moved to Red Deer, Alberta.

Olof born Sept. 25, 1896, came to Canada with older sister Lena and Olaus Akre, attended Pleasant Ridge School, confirmed at Skudesnes Lutheran Church, Loreburn, returned to the United States for the remainder of his life.

Bennie Leonard born Dec. 9, 1898, died Jan. 6, 1899 at one month of age.

Julius born April 23, 1901, died Sept. 6, 1901 at 4 months of age.

Note: Lovise (the Mother) died Sept. 11, 1901, just five days after giving birth to Julius. She was 44 years of age. Tollef (the Father) died Feb. 17, 1902, five months after his wife. He was 48 years of age.